

CARATTERISTICHE TECNICHE:

- LAVORAZIONE: ACCIAIO INOX STAMPATO
- CORPO E PARTI METALLICHE IN ACCIAIO INOX Aisi 316
- SFERA: ALLUMINIO CON RIVESTIMENTO IN NBR O FPM
- GUARNIZIONE: NBR (O FPM SU RICHIESTA)
- CONNESSIONI FILETTATE FEMMINA UNI ISO 228
- SALDATURE: A TIG SENZA APPORTO DI MATERIALE
- TEST IDRAULICO SU SALDATURE: ARIA COMPRESSA A 3 BAR SU OGNI VALVOLA
- PRESSIONE NOMINALE DI ESERCIZIO: 16 BAR
- TEMPERATURA DI ESERCIZIO: 0°C - +90°C (NBR)
0°C - +150°C (FPM, SOLO SU RICHIESTA)
- APPLICAZIONI: ACQUE REFLUE, FLUIDI DENSII O CARICHI DI ELEMENTI IN SOSPENSIONE
- INSTALLAZIONE: VERTICALE E ORIZZONTALE

TECHNICAL FEATURES:

- MANUFACTURING PROCESS: PRESSED STAINLESS STEEL
- BODY VALVE AND METALLIC PARTS IN STAINLESS STEEL Aisi 316
- BALL: NBR OR FPM COVERED ALUMINIUM
- SEAL RING: NBR (OR FPM ON REQUEST)
- THREADED ENDS: UNI ISO 228 FEMALE
- WELDED JOINTS: TIG METHOD WITHOUT ANY ADDITIONAL MATERIAL
- HYDRAULIC TEST ON WELDED JOINTS: COMPRESSED AIR AT 3 BAR ON EACH VALVE
- NOMINAL WORKING PRESSURE: 16 BAR
- WORKING TEMPERATURE: 0°C - +90°C (NBR)
0°C - +150°C (FPM, ONLY ON REQUEST)
- APPLICATIONS: DENSE AND LOADED LIQUIDS
- INSTALLATION: VERTICAL AND HORIZONTAL



DIMENSIONI E PESI

DIMENSIONS AND WEIGHTS

Misura Size	DN	Dimensioni in mm Dimensions in mm			Peso in gr Weight in gr	Pezzi per scatola Carton quantity
		A	B	C		
1" 1/4	32	175	99	50	1100	1
1" 1/2	40	190	99	50	1180	1
2"	50	210	112	60	1610	1

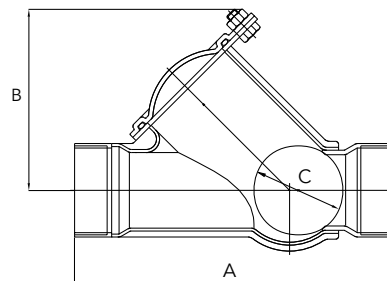
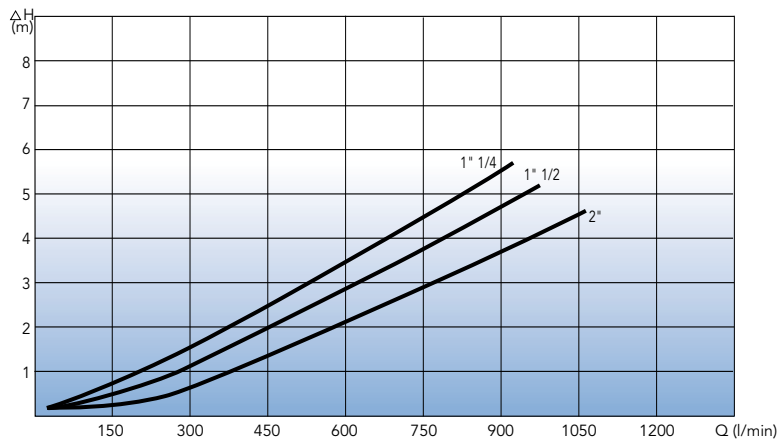


DIAGRAMMA PERDITE DI CARICO FRICTION LOSSES DIAGRAM



ERROR: undefinedresource
OFFENDING COMMAND: findresource

STACK:

/N2197
/ColorSpace
/N2197
-savelevel-