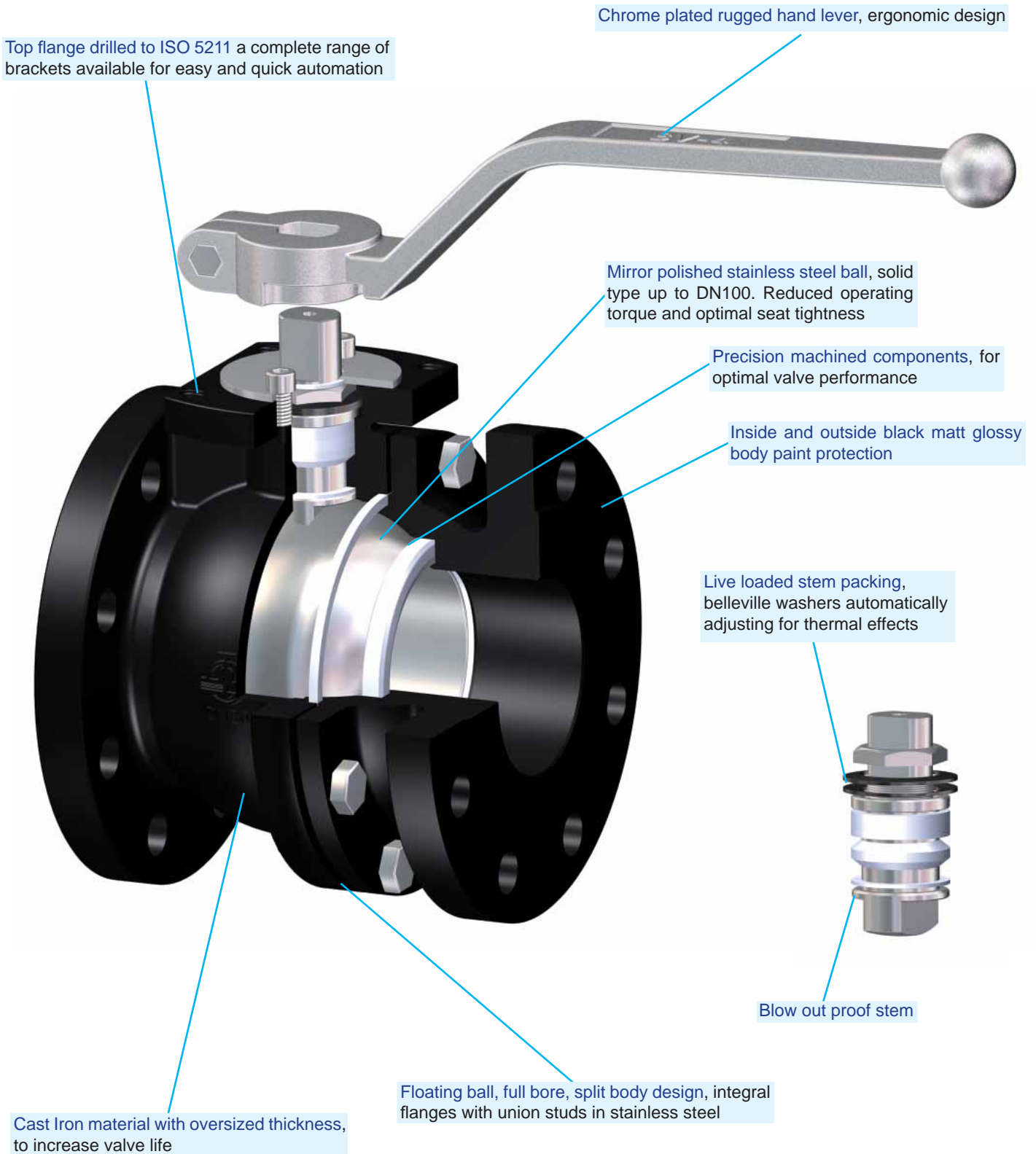


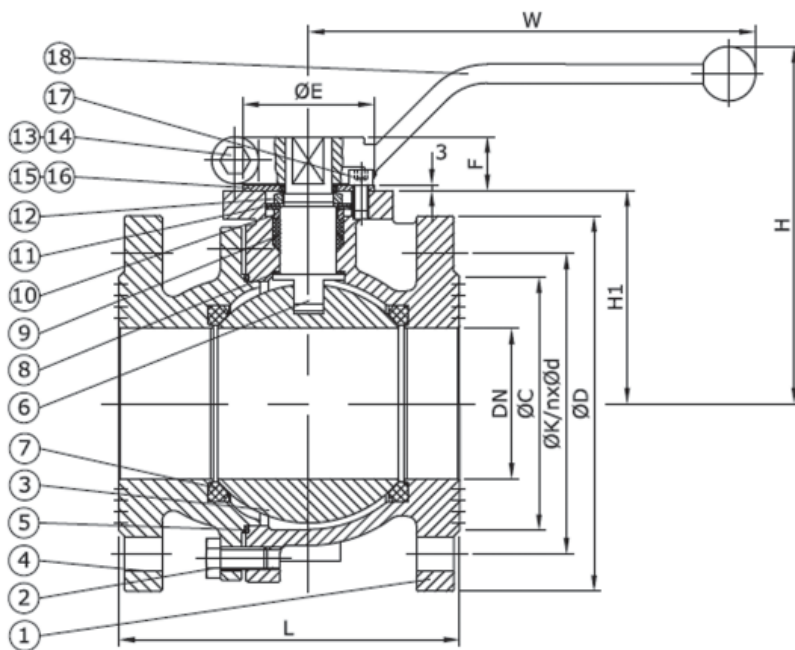
BV® BALL VALVES

Attributes of Design - BV42263

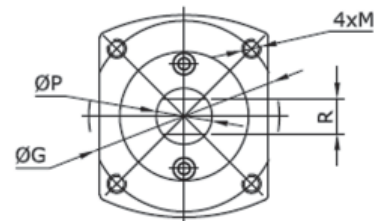


BV® BALL VALVES

Dimensions - BV42263



TOP VIEW DETAIL



DN	L	H	W	ØD	ØK	nxØd	ØC	ØE	F	H1	ØG	M	ØP	R	Weight (kg)
15	115	120	175	95	65	4x14	47	35	16	52	50	M6	12	8	3,5
20	120	120	175	105	75	4x14	57	35	16	54	50	M6	12	8	4,0
25	125	130	175	115	85	4x14	67	35	21	60	50	M6	16	10	5,0
32	130	135	175	140	100	4x18	78	35	21	65	50	M6	16	10	6,5
40	140	170	240	150	110	4x18	88	55	25	75	70	M8	20	14	9,0
50	150	175	240	165	125	4x18	102	55	25	83	70	M8	20	14	11,5
65	170	190	240	185	145	4x18	123	55	25	97	70	M8	20	14	16,5
80	180	220	330	200	160	8x18	135	70	27	114	102	M10	25	19	21,0
100	190	235	330	220	180	8x18	158	70	27	127	102	M10	25	19	27,5
125	325	290	690	250	210	8x18	187	85	38	158	125	M12	34	26	56,5
150	350	310	690	285	240	8x22	213	85	38	175	125	M12	34	26	76,5
200	400	--	--	340	295	12x22	268	100	43	245	140	M16	42	32	135,0

Dimensions are expressed in mm, and subjected to manufacturing tolerances. Data can be altered without notice by our Design Department for the product benefit.

Manufacturing Design Standards:

Split body, Full Bore, Floating Ball design

Harmonised Construction Standard DIN3357

QA certified to ISO 9001:2000

In compliance with Pressure Equipment Directive PED 97/23/EC Art.3, Parr.3

Testing to EN12266-1 (DIN3230 part 3)

Marking to EN19

Face to face dimension: DN15-100 DIN3202 F4 (EN558-1 Series 14 & 27)

DN125-200 DIN3202 F5 (EN558-1 Series 15 & 27)

Body end connections: flanged EN1092-2 PN16 integral flanges (type 21), raised face (type B)

Top flange drilled to ISO5211 for actuators mounting with standard brackets

Black matt inside and outside paint protection.

Operating Parameters:

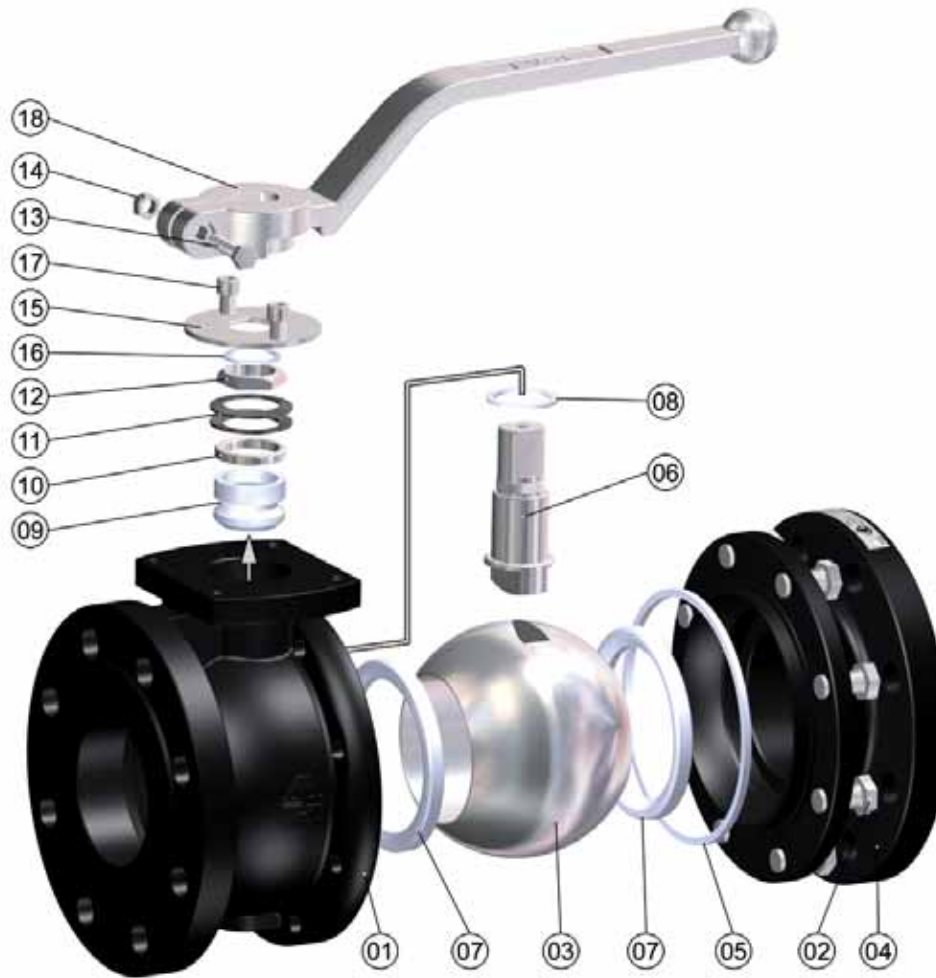
Working Pressure: 0...16 bar-g / Working Temperature $-10^{\circ}\text{C} \dots +200^{\circ}\text{C}$

(see Engineering Data for complete overview of Pressure-Temperature limits)

Main Applications: Water, oil, compressed air, low pressure steam, etc. depending on materials of construction

BV® BALL VALVES

Parts and Materials - BV42263



Nº	Part	Material
1	BODY	Cast Iron EN-JL1040
2	STUD	St. Steel 1.4408
3	BALL	St. Steel SS304
4	CAP	Cast Iron EN-JL1040
5	GASKET	PTFE
6	STEM	St. Steel SS304
7	SEAT	PTFE
8	THRUST WASHER	PTFE
9	PACKING	PTFE
10	GLAND RING	St. Steel SS304
11	BELLEVILLE DISC	Steel
12	NUT	St. Steel SS304
13	BOLT	St. Steel SS304
14	NUT	St. Steel SS304
15	COVER	Steel
16	COVER RING	PTFE
17	STUD BOLT	St. Steel SS304
18	HANDLE	DN15-100 Steel / DN125-200 Ductile Iron