

## Data sheet

# Flow measuring orifice **cim3723**

### Description/Application



Cimberio flow measuring orifices are used to precisely determine the flow in water based heating, cooling or potable water systems. This determination is done by measuring the differential pressure across the fixed orifice, which has a well known Kv value.

The differential pressure is in the Cim726 or another measuring instrument then translated into a flow.

#### Main data:

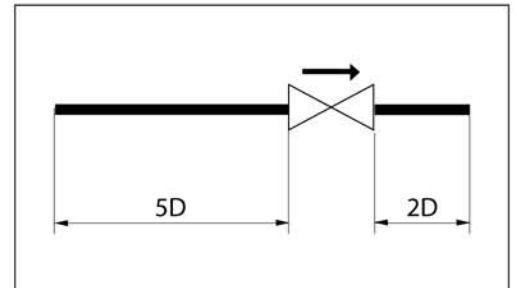
- Suitable for heating and cooling applications
- Supplied with 2 pcs. of measuring nipples for needles
- working temperature:  $-10 \dots 130 \text{ }^{\circ}\text{C}$
- PN 16 , 25 , 40

#### Materials:

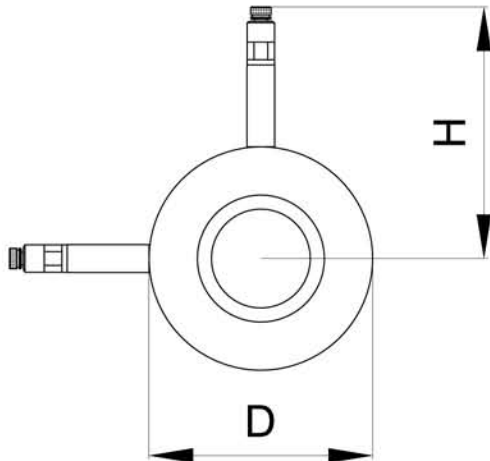
- Fixed orifice: Stainless steel
- Measuring points: Dezinfection free brass

### Instalation

The measuring orifice should be installed between two counter flanges. Check that these counter flanges are parallel and that the gaskets are according to given standard for flanges. Check also that the measuring orifice and the gaskets are correctly centered before tightening.



Ordering and Dimensions



PN 16

DN	D (mm)	H (mm)	Flange thickness (mm)	$k_{vs}^*$ (m <sup>3</sup> /h)
50	108	149	18	70,5
65	127	159	18	104,5
80	142	166	18	120,0
100	162	176	18	226,3
125	192	191	18	330,3
150	218	204	18	527,6
200	273	232	18	746,0
250	329	260	18	1118,3
300	384	287	18	1765,2
350	444	317	20	1966,8
400	496	343	23	2482,6
450	556	373	28	3299,4
500	618	404	28	4052,9
600	735	463	29	6240,0

\* Flow is measured at  $\Delta p = 0.2 - 0.3$  bar and recalculated to  $\Delta p = 1$  bar over the orifice  
 \*\* Orifices rated PN40 (fit also to PN16 and/or PN25 flanges)  
 \*\*\* Available on request

PN 25

DN	D (mm)	H (mm)	Flange thickness (mm)	$k_{vs}^*$ (m <sup>3</sup> /h)
50	108	149	18	70,5
65	127	159	18	104,5
80	142	166	18	120,0
100	168	179	18	226,3
125	194	192	18	330,3
150	224	207	18	527,6
200	284	237	18	746,0
250	341	266	18	1118,3
300	401	296	18	1765,2
350	458	324	20	1966,8
400	515	353	23	2482,6
450	565	378	28	3299,4
500	625	408	28	4052,9
600	732	461	29	6240,0

\* Flow is measured at  $\Delta p = 0.2 - 0.3$  bar and recalculated to  $\Delta p = 1$  bar over the orifice  
 \*\* Orifices rated PN40 (fit also to PN16 and/or PN25 flanges)  
 \*\*\* Available on request

PN 40

DN	D (mm)	H (mm)	Flange thickness (mm)	$k_{vs}^*$ (m <sup>3</sup> /h)
50	108	149	18	70,5
65	127	159	18	104,5
80	142	166	18	120,0
100	168	179	18	226,3
125	194	192	18	330,3
150	224	207	18	527,6
200	291	241	18	746,0
250	353	272	18	1118,3
300	418	304	18	1765,2
350	475	333	20	1966,8
400	547	369	23	2482,6
450	572	381	28	3299,4
500	629	410	28	4052,9
600	748	469	29	6240,0

\* Flow is measured at  $\Delta p = 0.2 - 0.3$  bar and recalculated to  $\Delta p = 1$  bar over the orifice  
 \*\*\* Available on request