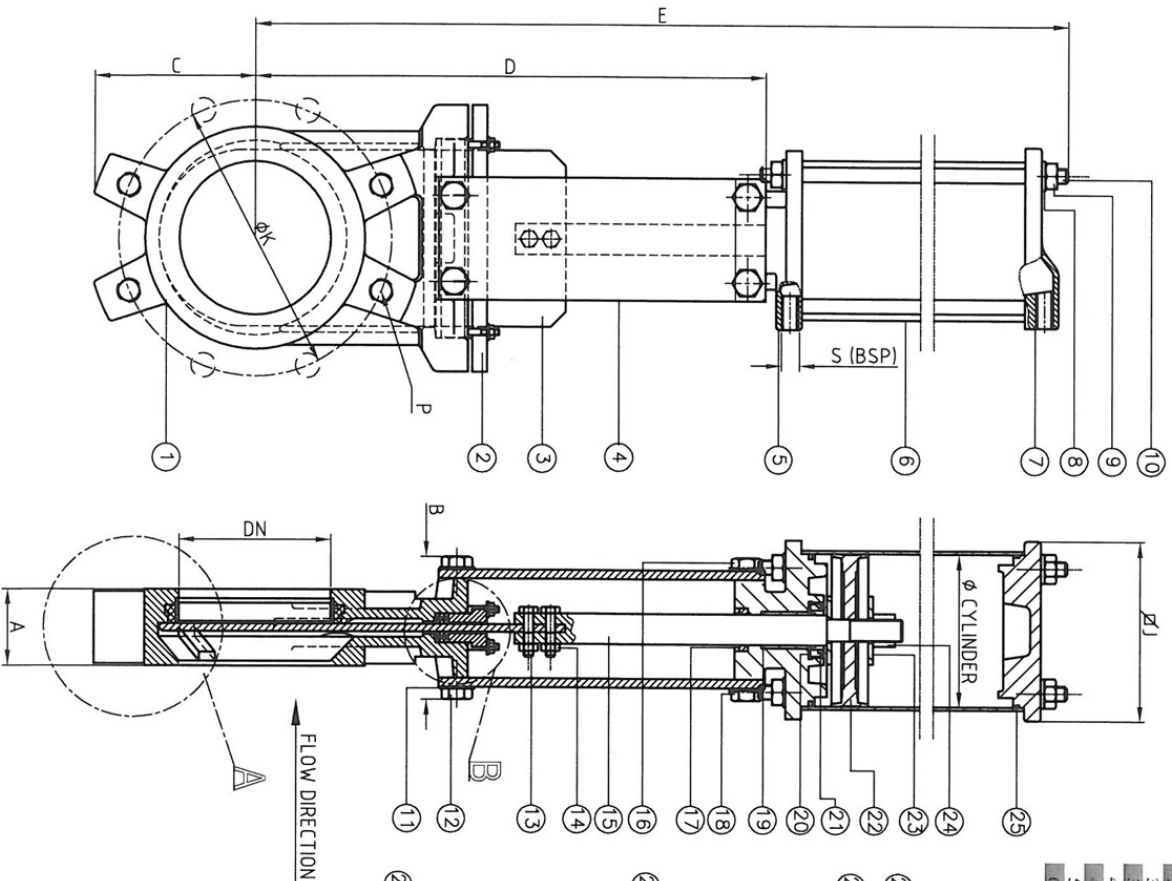
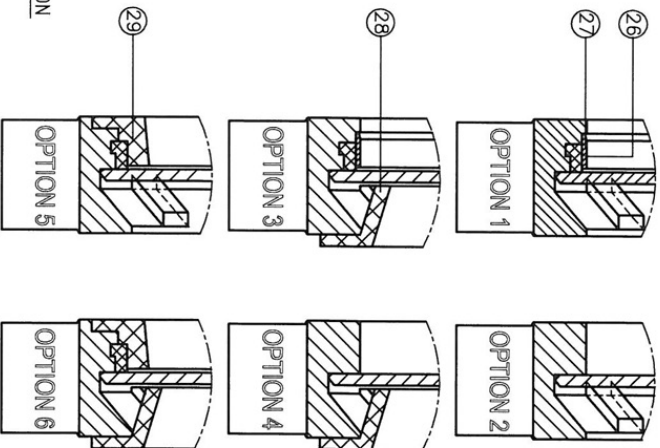


# KNIFE GATE VALVE (200EA D/A/PNEUMATIC ACTUATOR)

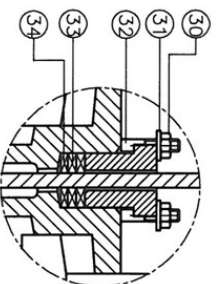


DN	INCHES	A	B	C	D	E	Ø CYLINDER	Ø J	S	DN	INCHES	PN10	ANSI 150	No. BOLTS	PN10	P	ANSI 150
									(Ø BSP)								
50	2"	40	90	68	240	410	80	102.5	1.4"	50	2"	125	120.6	4	M16	W 3.8"	
65	2.125"	40	90	68	270	456	80	102.5	1.4"	65	2.125"	145	130.7	4	M16	W 3.8"	
80	3"	50	90	90	295	500	80	102.5	1.4"	80	3"	160	152.4	8	M16	W 5.8"	
100	4"	90	90	105	335	560	100	127	1.4"	100	4"	180	190.5	8	M16	W 5.8"	
125	5"	50	100	118	370	640	125	147	1.4"	125	5"	210	215.9	8	M16	W 3.4"	
150	6"	60	100	135	418	716	125	147	1.4"	150	6"	240	241.3	8	M20	W 3.4"	
200	8"	60	120	170	522	880	160	182	1.4"	200	8"	295	298.4	8	M20	W 3.4"	
250	10"	70	130	202	625	1042	200	229	1.4"	250	10"	350	361.9	12	M20	W 7.8"	
300	12"	70	120	240	725	1182	200	229	1.4"	300	12"	400	431.8	12	M20	W 7.8"	
350	14"	96	192	255	845	1360	250	281	3.8"	350	14"	460	456.2	16	M24	W 1.8"	
400	16"	100	192	295	945	1540	250	281	3.8"	400	16"	515	539.7	16	M24	W 1.8"	
450	18"	106	192	318	1045	1675	300	343	3.8"	450	18"	565	577.8	20	M24	W 1.8"	
500	20"	110	192	345	1148	1840	300	343	3.8"	500	20"	620	635	20	M24	W 1.8"	
600	24"	110	290	405	1480	2145	300	343	3.8"	600	24"	725	749.3	20	M27	W 1.4"	

## SEAT OPTIONS



## DETAIL B



REF.	DENOMINACION	MATERIAL	MATERIAL
1	Body	Cast Iron GG25	SS316
2	Packing gland	Aluminum/GGG-50	SS316
3	Gate	SS304L	SS316L
4	Support plate	Steel	Steel
5	Lower cup	Aluminum	Aluminum
6	Pneumatic tube	Aluminum	Aluminum
7	Upper cup	Aluminum	Aluminum
8	Washer	Steel	A2
9	Nut	Steel	A2
10	Tie rod	Steel	A2
11	Grower washer	Steel	A2
12	Bolts	Steel	A2
13	Union studs stem-gate	Steel	A2
14	Union nuts stem-gate	Steel	A2
15	Stem	SS303	SS303
16	Nut	Steel	Steel
17	Scraper	NBR	NBR
18	Actuator fixing nut	Steel	Steel
19	Gasket	Bronze	Bronze
20	Sealing ring	NBR	NBR
21	Sealing gland	SS316	SS316
22	Piston rod	NBR	NBR
23	Washer	Steel	A2
24	Nut	Steel	A2
25	Sealing o'ring	EPDM	EPDM
26	Sealing Ring	SS316	SS316
27	Seat	EPDM*	EPDM*
28	Deflecting cone 15°	SS316*	SS316*
29	Reinforced ring 8°	SS316*	SS316*
30	Nut	Steel	A2
31	Washer	Steel	A2
32	Studs	Steel	A2
33	Packing o'ring	EPDM*	EPDM*
34	Packing gland	SYNT+PTFE*	SYNT+PTFE*

\*CONSULT MATERIAL

MAXIMUM WORKING PRESSURES RECOMMENDED:  
 DN50-DN250: 10Bar  
 DN300-DN400: 6Bar  
 DN450-DN600: 4Bar

STANDARD TEST PRESSURE:  
 DN50-DN400: 6Bar  
 DN450-DN600: 4Bar