

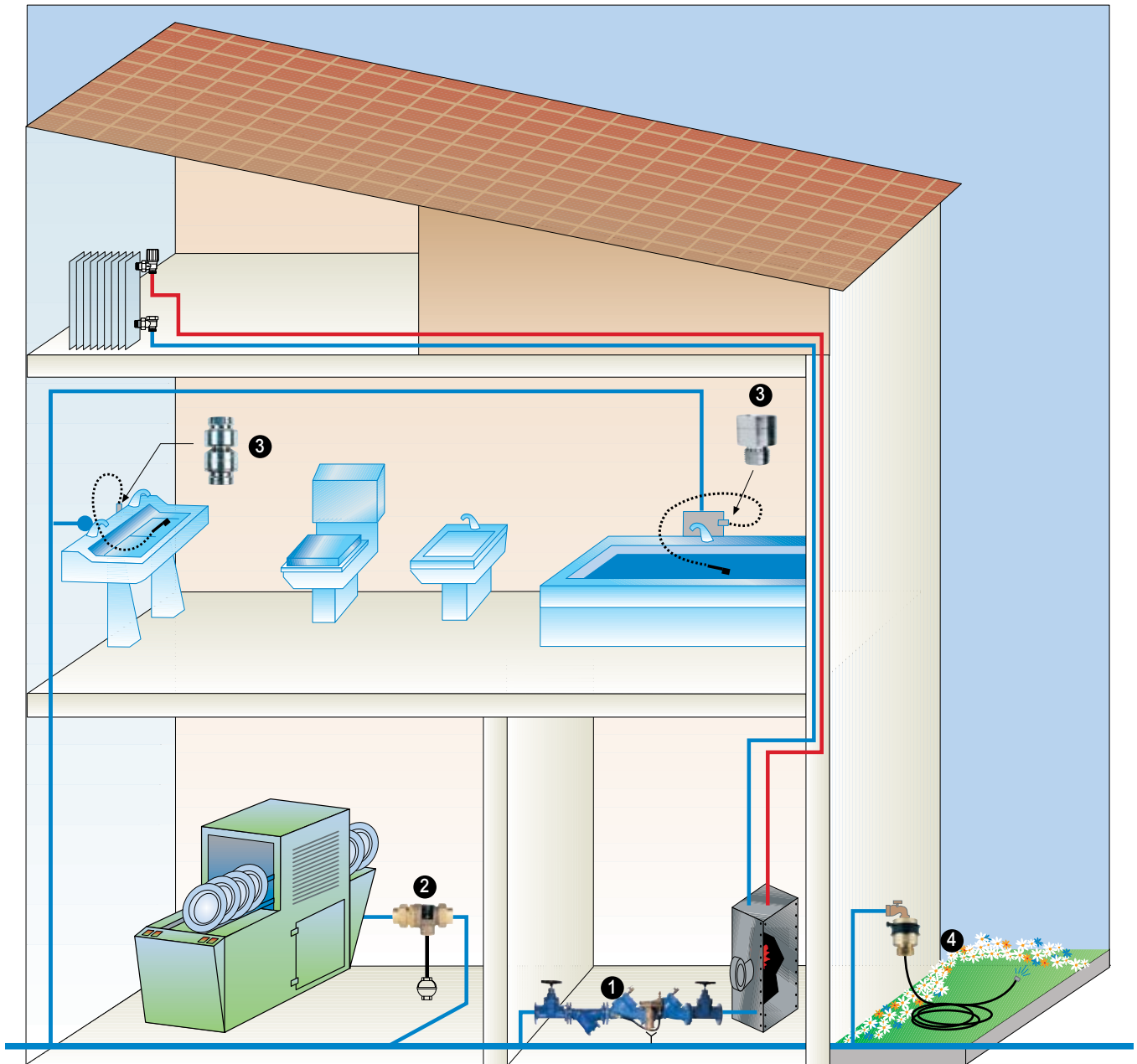
Section - L

# Antipollution devices



A division of Watts Water Technologies Inc.

## EXAMPLE OF APPLICATION



- 1 Backflow preventer unit.
- 2 Backflow preventers with unregulated pressure zone.
- 3 Anti siphon devices.
- 4 Anti siphon devices for watering taps.

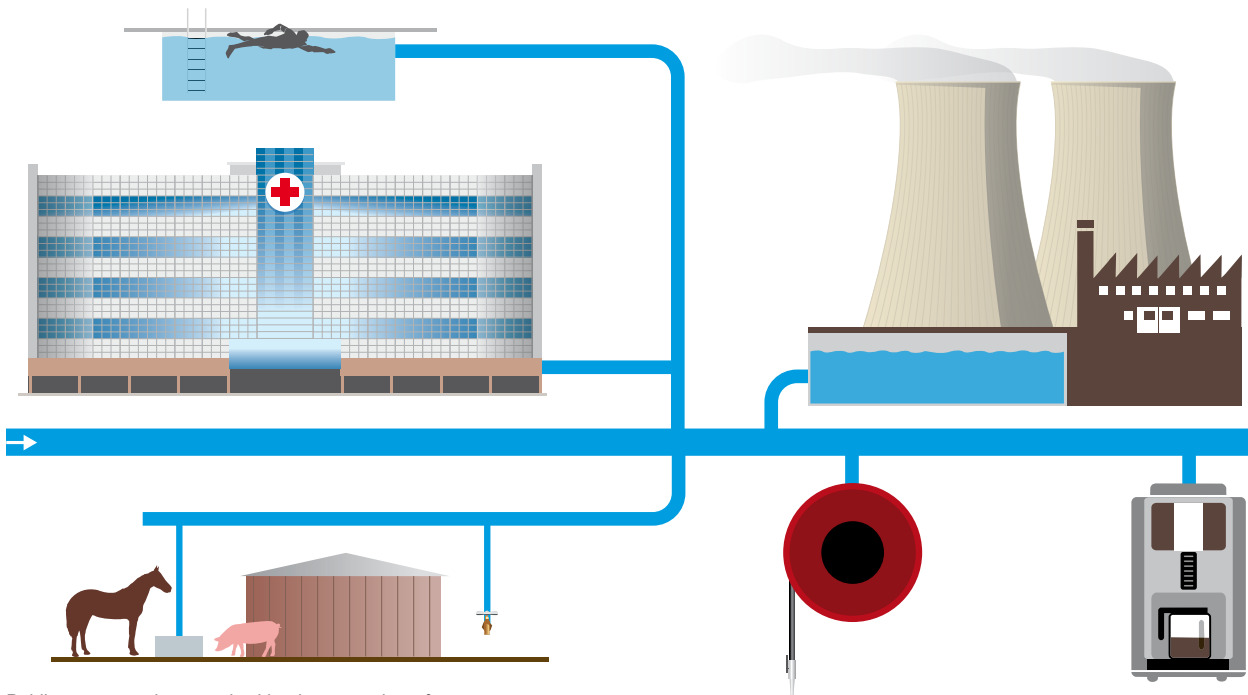
Please Note: The diagram is for illustrative purposes only and for guidance on specific applications please refer to the Water Regulations Manager at your local water company.

## RPZ BACKFLOW PREVENTERS-THREADED

**Modern and safe solutions for our drinking water**


Water is one of our most vital resources. Protecting our water quality is crucial to ensuring clean and safe drinking water for the future.

We use and distribute our water for many different purposes via a public water supply network that is becoming increasingly more complex. Consumers from all walks of life are connected to this network, which entails significant contamination risks for water supply and distribution systems. A challenging environment such as this calls for innovative and watertight security solutions that meet today's demands. A challenge that Watts Industries is fully capable of meeting.



Public water supply network with a large number of consumers

**BA BS & BA BM: the new standard in BA drinking water protection**

Watts Industries backflow prevention devices BA 009 and BA 909 are used worldwide to protect public water supply systems from contamination by backflow of liquids in hazard category 4, as defined in EN 1717.

To meet the new European and UR legislation and product specifications in this area, Watts Industries introduced the BA BS backflow prevention device in the dimensions DN 6, DN 8 and DN 10. The BA BS is designed specifically for low flow rate applications.

With its new BA BM, in the dimensions DN 15 to DN 50 inclusive, Watts Industries offers a complete range of backflow prevention devices that meet the requirements set out in the European standards EN1717 and EN12729 for protection of drinking water systems from backflow.

RPZ BACKFLOW PREVENTERS-THREADED

Technical specifications BA BS



The BA BS backflow prevention device has been specifically designed for low flow rate applications.

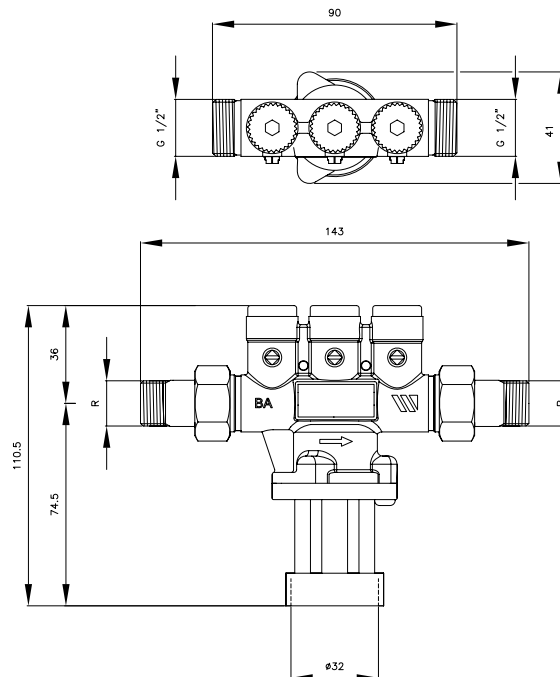
Standard

The BA BS has been developed in compliance with EN1717 and EN12729.

Installation guidelines

The BA BS is to be installed according to your national installation guidelines.

Overall dimensions



BA BS material specifications

Body	DZR brass CW602N
Relief valve body	plastic (PA)
Seal	rubber
Tundish	plastic
Connections	DZR brass

BA BS technical specifications

Max. system pressure	PN 10 (10 bar)
Nom. operating temp.	65 °C
Peak temperature	90 °C for 1 hour/day

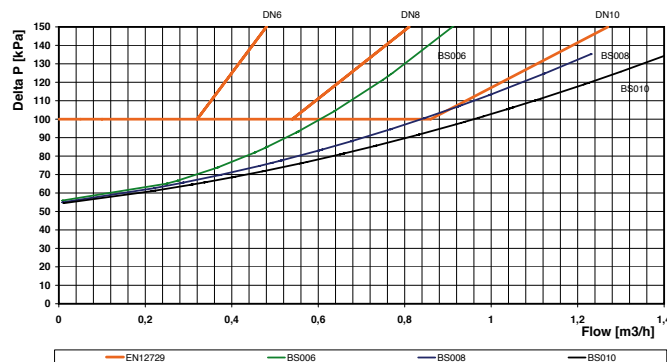
BA BS approvals

Kiwa, WRAS, NF, Belgaqua

Article numbers

Model BS	DN	Unit	Device
BA BS 006	6	405006311	405006010
BA BS 008	8	405008311	405008010
BA BS 010	10	405010311	405010010

BA BS pressure loss curve



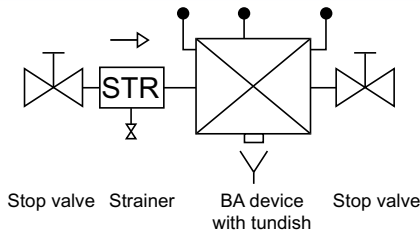
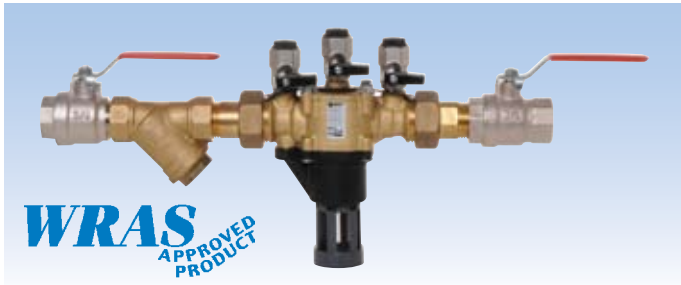
Cutting edge materials and technology

- Dezincification resistant brass (DR).
- Piston-driven relief valve, designed to reduce breakdown and maintenance and extend useful life of device. The absence of a diaphragm ensures that

- only a small area of the rubber surface will come in contact with potable water, reducing potential for excess sediment accumulation in device.
- A tundish, for draining out water and keeping floor dry.

**RPZ BACKFLOW PREVENTERS-THREADED**

**BA BM technical specifications**



The new BA BM range was developed to complement the BA BS range in order to satisfy the new European legislation and product specifications for backflow prevention devices that protect drinking water systems from backflow of liquids in hazard category 4, as defined in EN1717.

**Standard**

The BA BM is developed in accordance with EN1717 and EN12729.

**Installation guidelines**

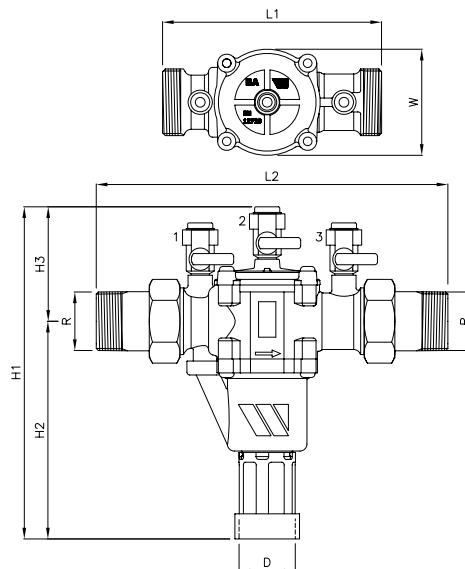
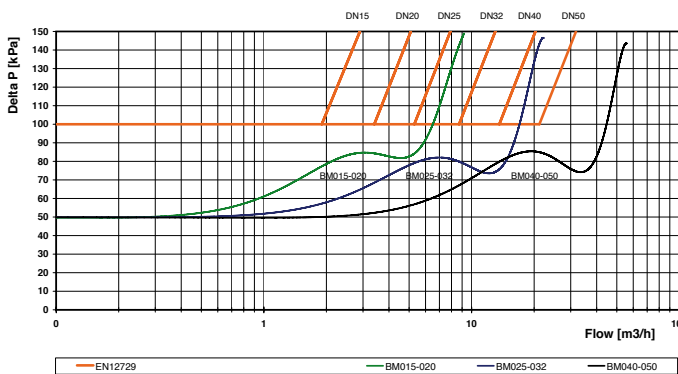
The BA BM is to be installed according to your national installation guidelines.

Valve supplied as either a unit which included strainer and isolating ball valves or as a device which is the valve on its own.

**Overall dimensions**

BA BM	unit	015	020	025	032	040	050
Connections (Male)	R	inch	½"	¾"	1"	1 ¼"	2"
Tundish connection (Female)	D	mm	32	32	40	40	50
Overall length excl. connections	L1	mm	122	122	157	157	220
Overall length incl. connections	L2	mm	201	201	252	252	336
Height	H1	mm	168.5	168.5	238	238	303.5
Height	H2	mm	103	103	156	156	202.5
Height	H3	mm	65.5	65.5	82	82	101
Width	W	mm	53	53	76	76	115
Weight, incl. connections and tundish	L	kg (+/-)	1,2	1,2	2,7	2,7	6,5

**BA BM pressure loss curves**



**BA BM material specifications**

Body	DZR brass CW602N
Relief valve body	plastic (PA)
1 <sup>st</sup> and 2 <sup>nd</sup> check valve module	plastic (POM)
Seal	rubber
Tundish	plastic
Connections	DZR

**BA BM technical specifications**

Max. system pressure	PN 10 (10 bar)
Nom. operating temperature	65 °C
Peak temperature	90 °C for 1 hour/day

**BA BM Approvals**

Kiwa, WRAS, DVGW, NF, Belgauqa

**Article numbers**

Model BM	DN	Unit	Device
BA BM 015	15	405015311	405015310
BA BM 020	20	405020311	405020310
BA BM 025	25	405025311	405025310
BA BM 032	32	405032311	405032310
BA BM 040	40	405040311	405040310
BA BM 050	50	405050311	405050310

## RPZ BACKFLOW PREVENTERS-THREADED

**Your Advantages****Compact and lightweight**

The BA BM range stands out among its peers by virtue of its exceptional build, size and weight.

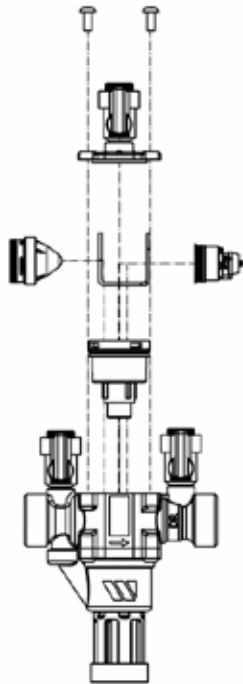
The use of less materials and more high-grade plastic for the body of the relief valve makes the devices easier to handle and more competitive in pricing.



The old 009



The new BA BM

**Lower pressure loss**

The use of cutting-edge design techniques, enables the smooth flow of liquid inside the device, resulting in lower pressure fall, far below the European standard EN12729.

Advantages:

- higher pressure and comfort at points-of-use;
- less energy consumption.

**Time-efficiency and cost-savings during maintenance, thanks to modular design**

Some of the advantages that come with the device include:

- Easy to handle and assemble, thanks to its light and compact design.
- Easy to install; all devices and modules are tested for proper functioning at the plant.
- Fast and efficient maintenance and replacement on site, enabled by the modular construction of the 1st and 2nd check valve and relief valve.
- No loose parts to get lost or misplaced.
- Save time during the annual inspection (by using the test kit TK9A).

**Logistical advantages: clustered construction and complete delivery****All in one unit**

The new BA BM range is also available as an all-in-one-package: complete BA prevention unit, including tundish, strainer and two stop valves. Components come out of the box ready to install which saves you valuable time and money.

**Efficient system**

With the complete BA BM unit, you have a reliable and efficient system. You are assured of an excellent backflow prevention device that complies with the requirements of construction standard EN1717.

**Less inventory**

The clustered construction of the DN 15 to DN 50 inclusive, and the supplied stop valves and strainer allows you to keep fewer spare parts in stock.


**BA**

**RPZ BACKFLOW PREVENTERS-THREADED**



**RPZ 009 – PROTECTION BA**

Backflow preventer designed to protect potable water supplies in accordance with national plumbing regulations and water company requirements up to Fluid Category 4.

Comprising two in-line, independent check valves, captured springs and replaceable check seats with an intermediate relief valve in a bronze body, supplied with Y type strainer and two isolating ball valves, with screwed BSP female end connections.

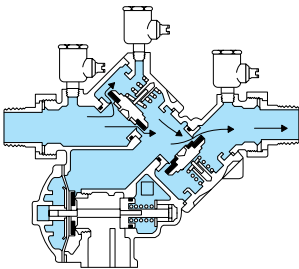
Max. operating pressure 12 bar. Operating temperature range 1°C to 80°C.

Type	Part number	Size body	Box Qty
RPZ009	EDP0062095	1/2"	1
RPZ009	EDP0063031	3/4"	1
RPZ009	EDP0063021	1"	1
RPZ009	EDP0062950	1-1/4"	1
RPZ009	EDP0062952	1-1/2"	1
RPZ009	EDP0063011	2"	1

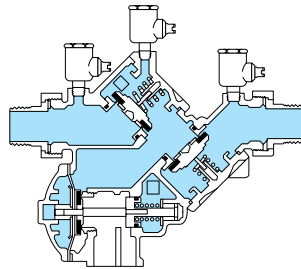
**Tundishes to suit above valves**

Type	Part number	Size body	Box Qty
TUNDISH	EDP0881399	1/2"-3/4"	1
TUNDISH	EDP0881376	1"-1 1/2"	1
TUNDISH	EDP881378	2"-3"	1

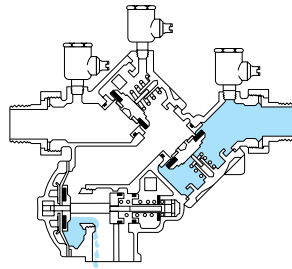
**Principle of operation**



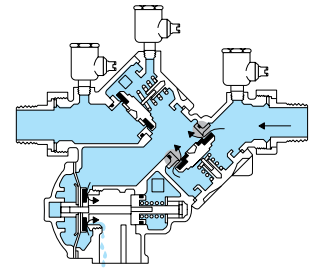
**1 - WATER FLOW UNDER NORMAL OPERATING CONDITIONS**  
The first and second check valves are opened in order to allow flow through the back flow preventer.



**2 - STATIC SITUATION (NO FLOW)**  
Both check valves are now closed.

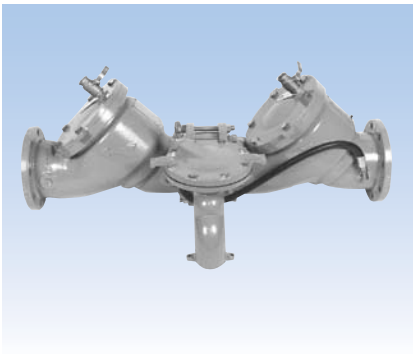


**3 - BACK SIPHON DEVICE**  
When there is no upstream pressure, both check valves are fully closed. Owing to effect of the decreased upstream pressure, the drain valve opens and discharges water from the central zone.



**4 - PRESSURE REVERSE (RETURN OF FLOW)**  
When pressure is reversed, the first check valve protects the water mains from possible contamination. The drain valve opens and discharges the contaminated water.

RPZ BACKFLOW PREVENTERS-FLANGED



**RPZ 909 - PROTECTION BA**

Backflow preventer designed to protect potable water supplies in accordance with national plumbing regulations and water company requirements up to Fluid Category 4.

Comprising two in-line, independent check valves, captured springs and replaceable check seats with a high discharge capacity relief valve in an epoxy coated cast iron body, flanged PN10 end connections.

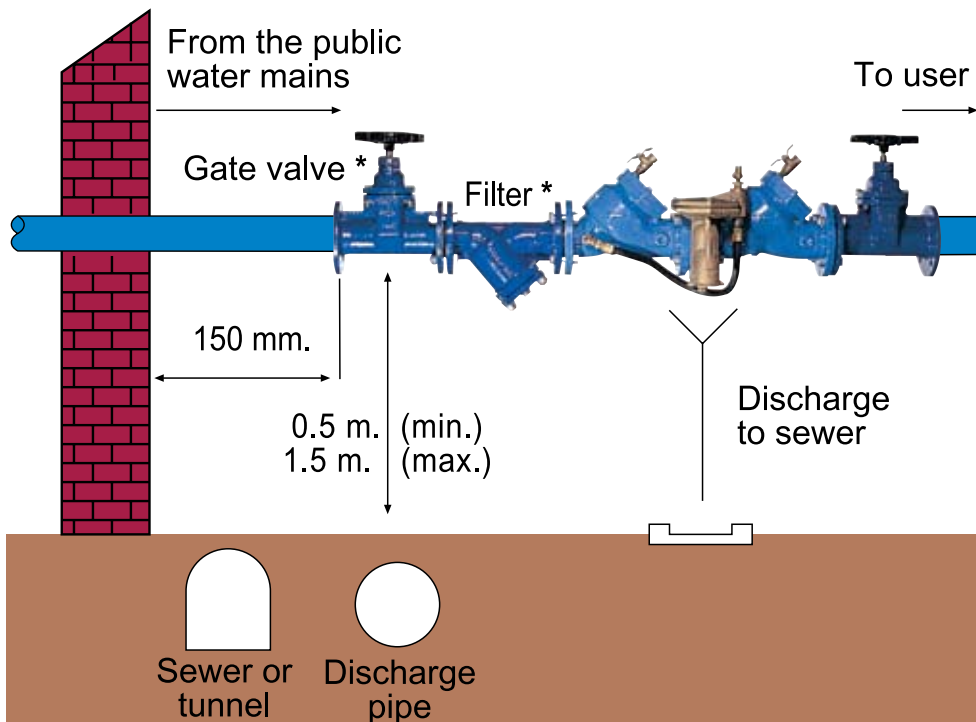
Max. operating pressure 12 bar. Operating temperature range Min. 1°C to Max. 60°C.

Type	Part number	Size body	Box Qty
RPz909	EDP385943	2-1/2"	1
RPz909	EDP385945	3"	1
RPz909	EDP385934	4"	1
RPz909	EDP385935	6"	1
RPz909	EDP385596	8"	1
RPz909	EDP385615	10"	1

**Tundishes to suit above valves**

Type	Part number	Size body	Box Qty
TUNDISH	EDP881378	2"-3"	1
TUNDISH	EDP0881385	4"-10"	1

**Installation example**



Guidance only  
please refer to Local  
Guidelines

**BACKFLOW PREVENTER TEST KITS**

**TK99D DIGITAL**

Differential electronic pressure gauge for monitoring differential pressures and checking for correct operation of backflow preventers. Series RPZ009 and RPZ909 during normal yearly maintenance. Compact and practical device, easy to use.

Maximum accuracy in measurement (error 0.25%) with reading of data on liquid crystal display. Indicator of battery consumption and automatic stop of the gauge after 15 minutes of non use. High impact and water-tight ABS case. Corrosion-resistant stainless steel needle valves, with interchangeable seats. Stainless steel (316) protection strainer (100µ).

Max. pressure: 14 bar. Max. temperature: 99°C.

Complete with brass fittings and adapters.

Three Flexible pipes, size 91cm, in different colours and with FF fittings.

Supplied with two alkaline batteries type C to ensure a back-up time of 400 running hours.

Type	Part number	Box Qty
TK-99D PSI	EDP385516	1
TK-99D KPA	EDP385518	1
CARRY CASE	EDP0385508	1


**TK-9A MECHANICAL**

Mechanical differential pressure gauge for monitoring differential pressures and checking for correct operation of backflow preventers RPZ009 and RPZ909 during normal yearly maintenance. Compact and portable device.

Max. pressure: 12 bar. Max. temperature: 100°C.

Gauge diameter 100mm range 0 –15 psid and 0 – 1 bar with a ± 2% accuracy full scale.

Three Flexible hoses, 1 metre long, colour coded with Female Flare fittings.

The unit is supplied with a rugged, lightweight, shock resistant carrying case.

Type	Part number	Box Qty
TK-9A	EDP385496	1

**BACKFLOW PREVENTER, ANTI-SIPHON VACUUM BREAKER DEVICES**

**TYPE CA**

Backflow preventer, non-verifiable disconnecter with different pressure zones, built-in filter. WRAS approved to Category 3. Commonly used to directly connect appliances such as domestic heating boilers up to 45 kW permanently to a mains supply. DZR brass body, EPDM diaphragm with stainless steel internals. Female union ends.

Max. operating pressure: 10 bar. Operating temperature range: Min. 1°C Max. 65°C.

**Protection : CA**

**According to WRAS, KIWA-NL, ANSEAU, ASSE, CSA.**

Type	Part number	Size body	Box Qty
PLAIN BRASS + AIR GAP	30115E	1/2"	1
NICKEL PLATED + AIR GAP	30157	1/2"	1
PLAIN BRASS + AIR GAP	30215	3/4"	1

**WRAS**  
APPROVED  
PRODUCT

## CAST IRON CHECK VALVES



### FC

Spheroidal cast iron check valve with flanged connections.

Check function controllable according to EN 13959.

Field of application :

- as anti-pollution device in drinking water supply with EA protection according to EN1717.
- as non-return (check) valve in all hot and cold domestic water supply circuits, in distribution networks of fluid operating in the systems, in pumping stations, etc.

Operating pressure : 16 bar.

Max. temperature : 70°C.

Min. temperature : 4°C.

Spheroidal cast iron body.

Pull-out polymeric functional device (Check).

Elastomeric parts : NBR.

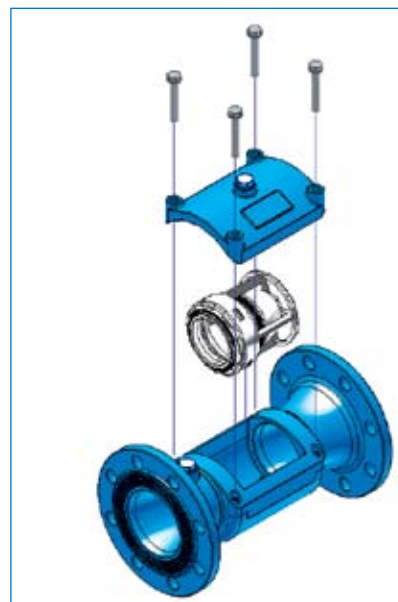
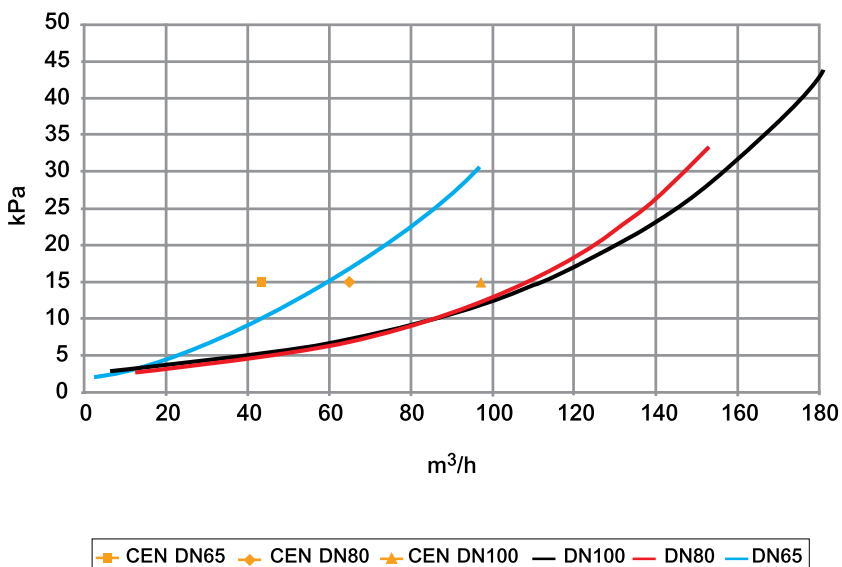
Other components: stainless steel.

Approvals : Belgaqua. WRAS

Type	Part number	Size body	Box Qty
FC	308065361	65 MM	1
FC	308080361	80 MM	1
FC	308100361	100 MM	1
FC	308125361	125 MM	1
FC	308150361	150 MM	1
FC	308200361	200 MM	1
FC	308250361	250 MM	1

### FC hydraulic characteristic

Pressure drop curves



## BRASS CHECK VALVES



### NN & NR

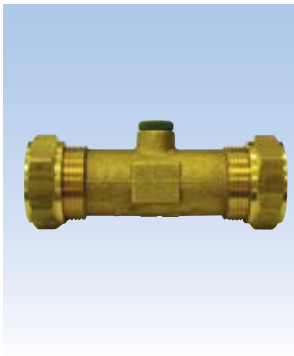
Check valve with low opening pressure and protection against water hammer. Silent operation thanks to double guided pin-plug. Replaceable plastic insert check. NBR seals. Stainless steel spring. Chrome plated brass body.

Type NN – flow direction from male to female thread.

Type NR – flow direction from female to male thread.

Max. operating pressure: 16 bar. Max. operating temperature: 100°C.

Type	Part number	Size body	Box Qty
NN	230015165	1/2"	25
NN	230020165	3/4"	25
NR	235015165	1/2"	25
NR	235020165	3/4"	25



### CE & FT DOUBLE CHECK

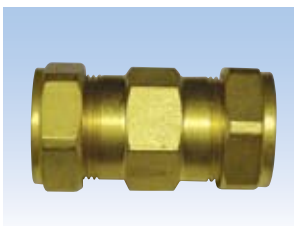
Type CE with compression fittings Type FT with screwed female ends, both valves with single test point. Low opening pressure and water hammer protection. Silent operation thanks to the special double guide pin-plug. Replaceable insert check valve. DZR brass body. Insert: polymer POM. Seal: Rubber NBR. Spring: Stainless steel.

Max working pressure: 16 bar. Max working temperature: 90°C.

Can be installed in any position.

Type	Part number	Size body	Box Qty
CE	270025115	28MM	25
FT	273020110	3/4" F/F	25

## EXTRA CHECK VALVES



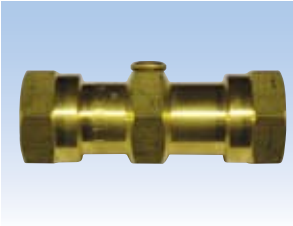
### SINGLE CHECK VALVES

Brass body with Copper Compression and Screwed BSP Female end connections.

Type	Part number	Size body	Box Qty
COPPER COMPRESSION	M10500	15 MM	25
COPPER COMPRESSION	M10501	22 MM	25
COPPER COMPRESSION	M10502	28 MM	25

Type	Part number	Size body	Box Qty
SCREWED ENDS	M10520	1/2"	25
SCREWED ENDS	M10521	3/4"	25
SCREWED ENDS	M10522	1"	25
SCREWED ENDS	M10523	1-1/4"	25
SCREWED ENDS	M10524	1-1/2"	25
SCREWED ENDS	M10525	2"	25

EXTRA CHECK VALVES



**DOUBLE CHECK VALVES**

DZR Brass body with Copper Compression and Screwed BSP Female end connections.

Type	Part number	Size body	Box Qty
COPPER COMPRESSION	107207	15 MM	25
COPPER COMPRESSION	107218	22 MM	25
COPPER COMPRESSION	107220	28 MM	25

Type	Part number	Size body	Box Qty
SCREWED ENDS	M10603	1/2"	25
SCREWED ENDS	M10604	3/4"	25
SCREWED ENDS	M10605	1"	25
SCREWED ENDS	M10606	1-1/4"	25
SCREWED ENDS	M10607	1-1/2"	25
SCREWED ENDS	M10608	2"	25



**DOUBLE CHECK VALVES**

DZR Brass body Nickel Plated with Copper Compression end connections.

Type	Part number	Size body	Box Qty
COPPER COMPRESSION	107215	15 MM	25
COPPER COMPRESSION	M10601	22 MM	25
COPPER COMPRESSION	M10602	28 MM	25



**DOUBLE CHECK VALVES**

DZR Brass body plain finish with Copper Compression end connections.

Type	Part number	Size body	Box Qty
COPPER COMPRESSION	172015000	15 MM	25
COPPER COMPRESSION	172022000	22 MM	25

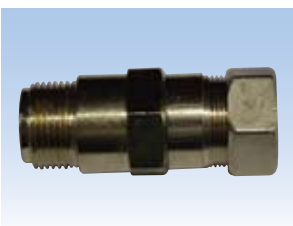


**DOUBLE CHECK WITH BALL VALVE**

DZR Brass body nickel plated finish with Copper Compression end connections. Outlet connection also suitable as 1/2" BSP Male connection, suitable for use on filling loop.

Direction of flow: Ball valve with T handle, double check valve with single test point.

Type	Part number	Size body	Box Qty
COPPER COMPRESSION	M10650	15 MM	25

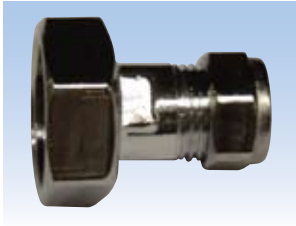


**SINGLE CHECK VALVE ASSEMBLIES**

Brass body Nickel Plated Copper Compression Inlet x BSP Male end connections.

Type	Part number	Size body	Box Qty
4042 INSERT	M10498	15 MM X 1/2" BSPM	1
4043 INSERT	M10497	22 MM X 1/3" BSPM	1

## EXTRA CHECK VALVES


**SINGLE CHECK VALVE ASSEMBLIES**

Brass body Nickel Plated Copper Compression Inlet x Swivel BSP Female end connections.

Type	Part number	Size body	Box Qty
INSERT	M40100	15 MM X 1" BSPM	1


**DOUBLE CHECK VALVE 9BD**

Backflow preventer for vending machine supply lines and other similar applications.

Prevents backflow of carbon dioxide gas and carbonated water into the potable water supply. Double check valve assembly equipped with a ball check valve.

Stainless steel body and internals with BSP Male end connections.

Max. operating pressure 10 bar. Max. temperature: 60°C.

Type	Part number	Size body	Box Qty
9BD	EDP91911	1/4"	1
9BD	EDP61894	3/8"	1


**TYPE HA SERIES S8C**

Anti-siphon hose connection vacuum breaker device for use between shower spray heads and the mixer taps. Recommended where there is a risk of backflow when a flexible hose may be submerged in a bath or sink.

Chrome plated brass body, connection Male/Female.

Max. operating pressure 10 bar. Max. temperature 60°C.

**Protection: HA**

**According to ASSE, CSA, ANSI.**

Type	Part number	Size body	Box Qty
S8C	EDP61852	MF 1/2"	1


**TYPE HA SERIES NF8**

Anti-siphon vacuum breaker device for use between outside taps and the hosepipe.

Installed between the tap and flexible hose. Provided with anti-freeze device to allow emptying of the valve.

Brass body, connection Female/Male.

Max. operating pressure 10 bar. Max. temperature 60°C.

**Protection : HA**

**According to ASSE, CSA, ANSI.**

Type	Part number	Size body	Box Qty
NF8	EDP0061859	F/M 3/4" BSP	1

BACKFLOW PREVENTER, ANTI-SIPHON VACUUM BREAKER DEVICES



**TYPE HA SERIES N9C**

Anti-siphon device, identical to model S8C but for use within a system with continuous pressure. Installed on the end of the tap at the water outlet.

Brass body, connections screwed.

Max. operating pressure 10 bar. Max. temperature 60°C.

**Protection : HA**

**According to ASSE, CSA, ANSI.**

Type	End connections	Part number	Size body	Box Qty
N9C	F X F	EDP0061906	1/4" NPT	1
N9C	F X F	EDP63053	3/8" NPT	1
N9C	F X F	EDP63059	3/8" BSP	1
NLF9	M X F	EDP63052	3/8" NPT	1



**TYPE DA SERIES 288**

Anti-siphon device, identical to model S8C but for use within a system with continuous pressure. Installed on the end of the tap at the water outlet.

Brass body, connections screwed.

Max. operating pressure 10 bar. Max. temperature 60°C.

**Protection : HA**

**According to ASSE, CSA, ANSI.**

Type	Part number	Size body	Box Qty
288A	20528	1/4"	1
288AC	EDP339977	1/4"	1
288A	EDP339988	3/8"	1
288AC	EDP339985	3/8"	1
288A	EDP336405	1/2"	1
288AC	20520/EDP3399810	1/2"	1
288A	EDP336455	3/4"	1
288AC	20523/EDP339992	3/4"	1
288A	EDP336420	1"	1

**PLASTIC CHECK VALVES**

**IN**

Plastic check valve. Designed for easy assembly into faucets, fittings, pumps, filtration equipment and other type of water handling or processing equipment. Simple assembly. Short overall length. Low opening pressure. Low pressure loss. Body: POM polymer. Seat: SBR Buna-S. O-ring: NBR Buna-N. Spring: Stainless steel. Working pressure: 10 bar. Max. working pressure: 16 bar. Max. working temperature: 90°C.

**Approvals: KIWA-NL - DVGW - NF - WRc - NSF - ETA - SITAC.**

TYPE	PART NUMBER	DESCRIPTION	SIZE BODY	BOX QTY
IN	149015710	IN015	15 MM	500
IN	149020710	IN020	20 MM	250
IN	149025710	IN025	25 MM	100
IN	149032710	IN032	32 MM	50
IN	149040710	IN040	40 MM	25
IN	149050710	IN050	50 MM	10


**IO**

Plastic check valve. Designed for easy assembly into faucets, fittings, pumps, filtration equipment and other type of water handling or processing equipment.

Simple assembly. Short overall length. Low opening pressure. Low pressure loss.

Body: POM polymer. Seat: SBR Buna-S. O-ring: NBR Buna-N. Spring: Stainless steel.

Working pressure: 10 bar. Max. working pressure: 16 bar. Max. working temperature: 90°C.

**Approvals : KIWA-NL - DVGW - SVGW - NF - WRc - NSF - ETA - SITAC. \*Not WRAS Approved.**

TYPE	PART NUMBER	DESCRIPTION	SIZE BODY	BOX QTY
IO	149015220	IO015	15 MM	500
IO	149020720	IO020	20 MM	250
IO	149025720	IO025	25 MM	100
IO	149032720	IO032	32 MM	50
IO	*149040720	IO040	40 MM	25
IO	*149050720	IO050	50 MM	10


**CO**

Plastic check valve. Designed for easy assembly into faucets, fittings, pumps, filtration equipment, and other type of water handling or processing equipment.

Same as type IN but with reduced dimensions. and without "snap-in-cams".

Can be used where the IO series and IN series cannot be. Body: POM polymer.

Seat: SBR Buna-S. O-ring: NBR Buna-N. Spring: Stainless steel. Working pressure: 10 bar.

Max. working pressure: 16 bar. Max. working temperature: 90°C.

**Approvals: KIWA-NL - DVGW - Belgaqua - NF- WRc - NSF - ETA - SITAC.**

TYPE	PART NUMBER	DESCRIPTION	SIZE BODY	BOX QTY
CO	149010730	CO10	10 MM	500
CO	149012630	CO12	12 MM	500
CO	149013730	CO13	13 MM	500
CO	149014730	CO14	14 MM	500
CO	149015730	CO15	15 MM	500
CO	149020730	CO20	20 MM	500
CO	149022630	CO22	22 MM	250


**CS**

Plastic check valve. Body: PPO polymer. O-ring: NBR. Buna-N. Spring: Stainless steel.

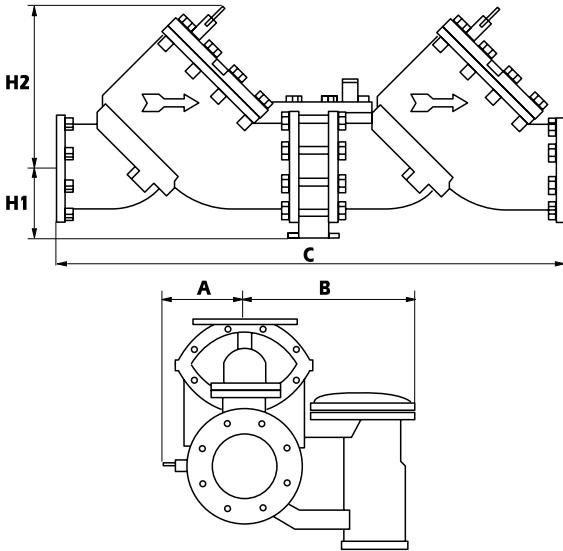
Max. working pressure: 16 bar (CS015) – 25bar (others). Max. working temperature: 90°C.

**Approvals: KIWA-NL - DVGW - NF - IFB - WRAS - NSF - ETA - SITAC.**

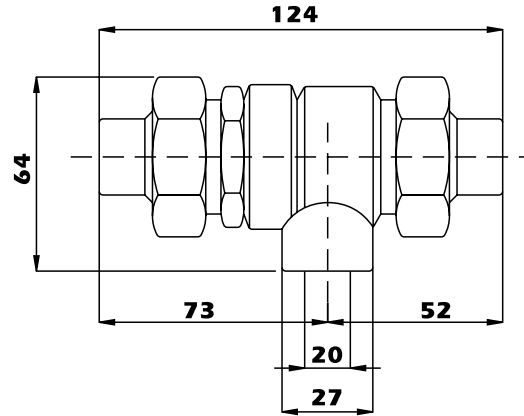
TYPE	PART NUMBER	DESCRIPTION	SIZE BODY	BOX QTY
CS	149015685	CS015	10	1
CS	149100635	CS100	100	1
CS	149150635	CS150	150	1
CS	149250635	CS250	250	1

CHAPTER L

**BA909LF**

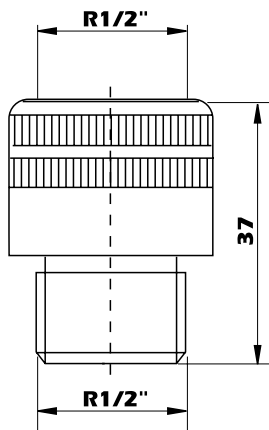


**CA9C**

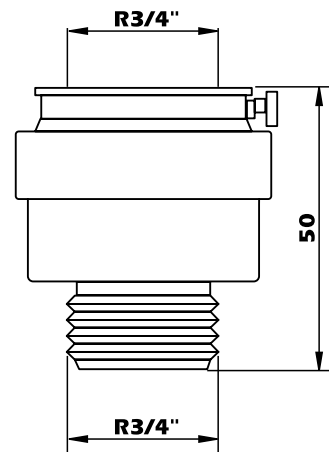


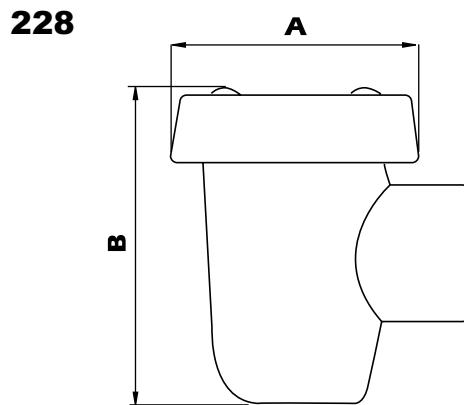
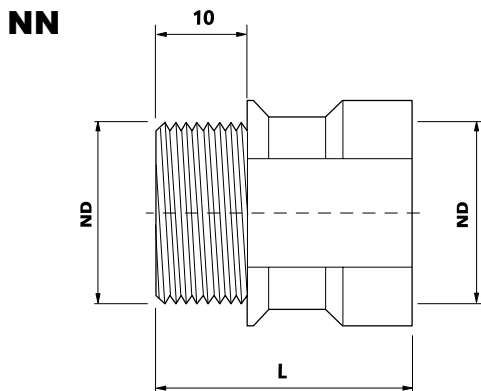
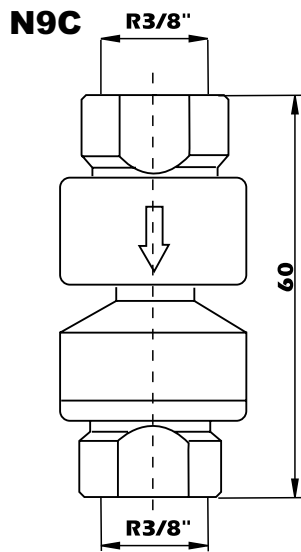
ND	A	B	C	H1	H2
5	102	229	664	133	178
80	127	229	664	133	178
100	152	346	940	152	241
150	241	346	1130	152	368
200	267	470	1403	248	470
250	298	470	1715	248	546

**S8C**



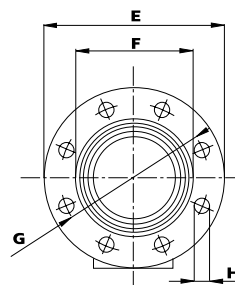
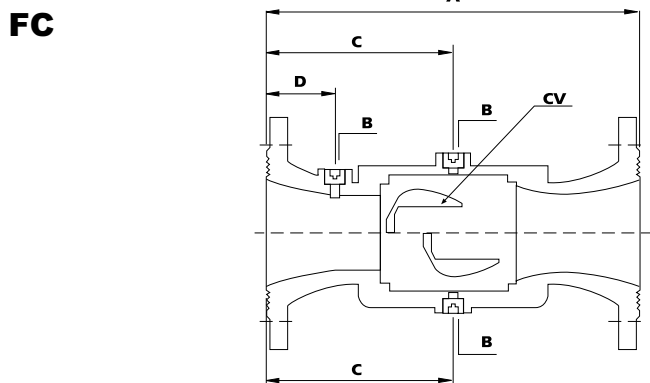
**NF8**





DN	L
1/2"	30
3/4"	35

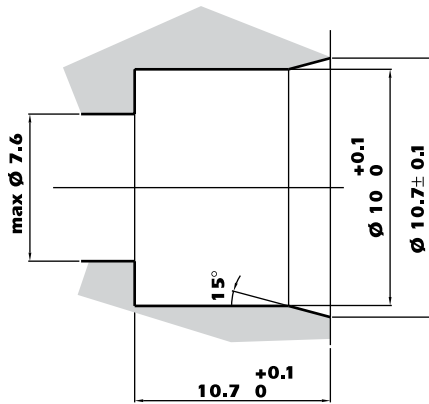
ND	A	B
1/4"	47	62
3/8"	47	62
1/2"	47	62
3/4"	52	79
1"	74	107



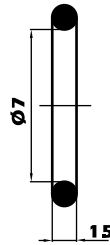
DN	CV	A	B	C	D	E	F	G	H
60	CS100	290	G1/2	145	37,5	185	118	135	4X9
65	CS100	290	G1/2	145	37,5	185	118	145	4X9
80	CS100	310	G1/2	155	44	200	132	160	8X19
100	CS100	350	G1/2	175	64	220	156	180	8X19
125	CS150	400	G1/2	200	47	250	184	210	8X19
150	CS150	480	G1/2	240	87	258	211	240	8X19
200	CS200	600	G1/2	300	71	340	266	295	12X23
250	CS250	730	G1/2	365	102	405	319	355	12X28

CHAPTER L

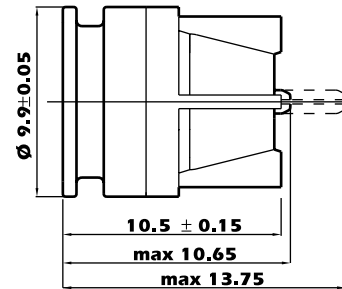
**CO 010 ND8**



MOUNTING DIMENSIONS

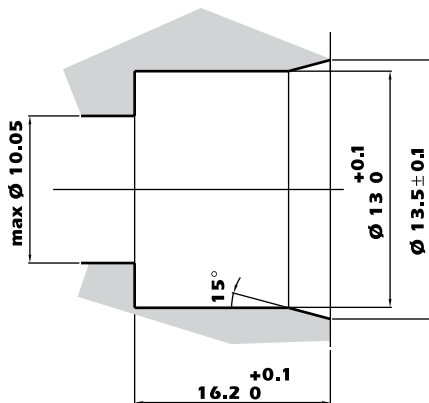


O RING

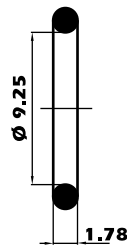


PRODUCT DIMENSIONS

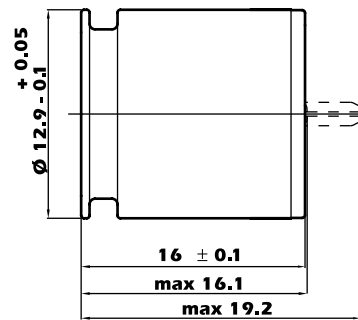
**CO 013 ND10**



MOUNTING DIMENSIONS

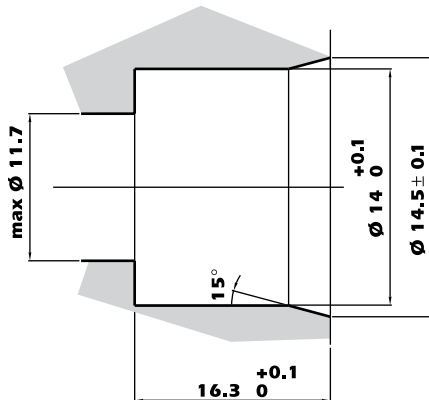


O RING

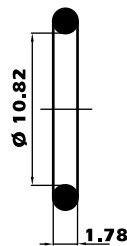


PRODUCT DIMENSIONS

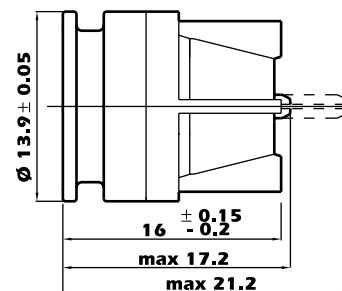
**CO 014 ND10**



MOUNTING DIMENSIONS

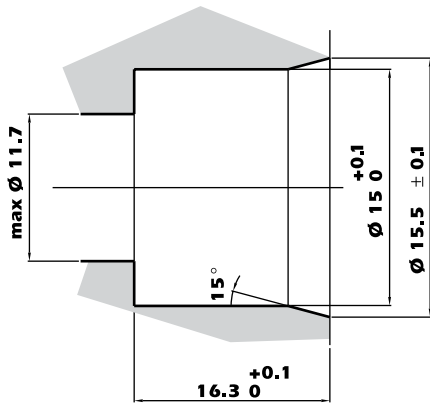


O RING

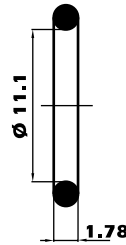


PRODUCT DIMENSIONS

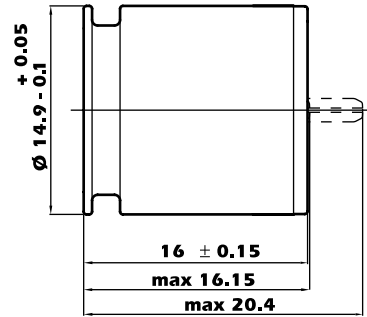
**CO 015 ND10**



MOUNTING DIMENSIONS

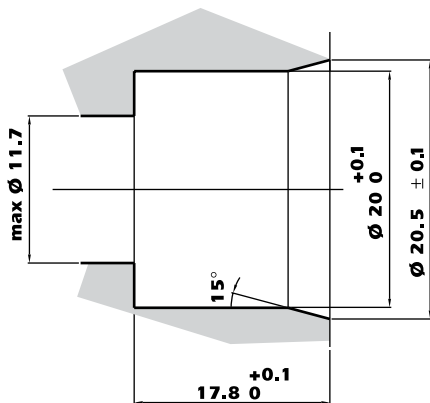


O RING

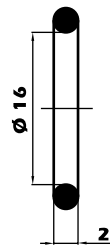


PRODUCT DIMENSIONS

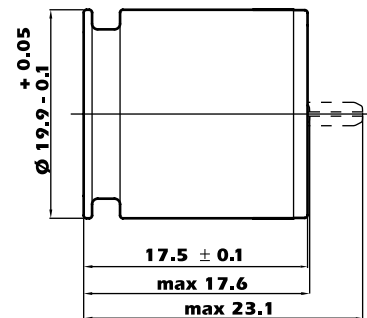
**CO 020 ND15**



MOUNTING DIMENSIONS

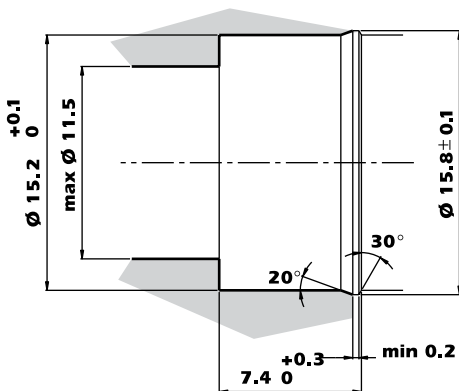


O RING

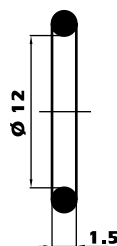


PRODUCT DIMENSIONS

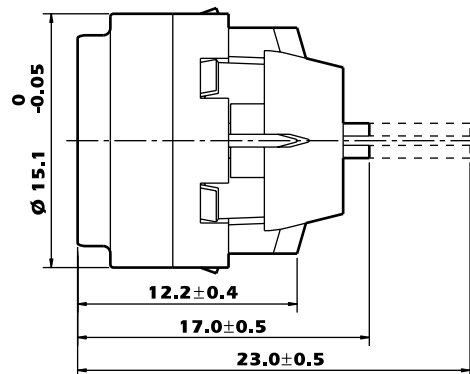
**IN 015 ND15**



MOUNTING DIMENSIONS



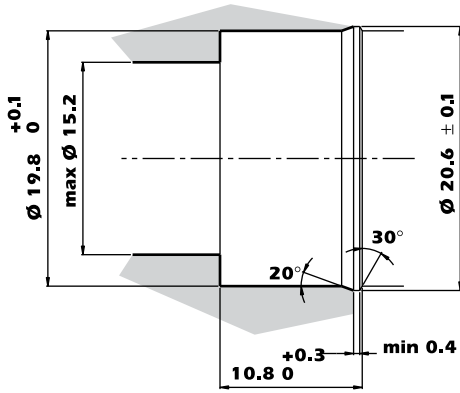
O RING



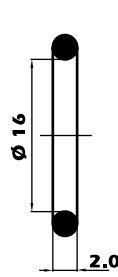
PRODUCT DIMENSIONS

CHAPTER L

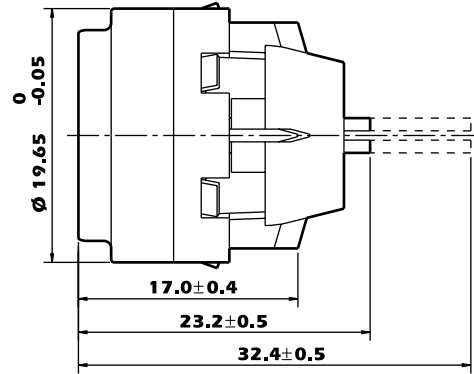
**IN 020 ND20**



MOUNTING DIMENSIONS

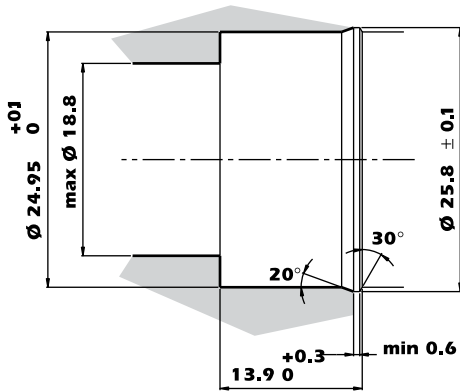


O RING

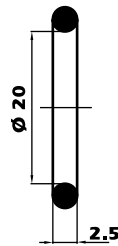


PRODUCT DIMENSIONS

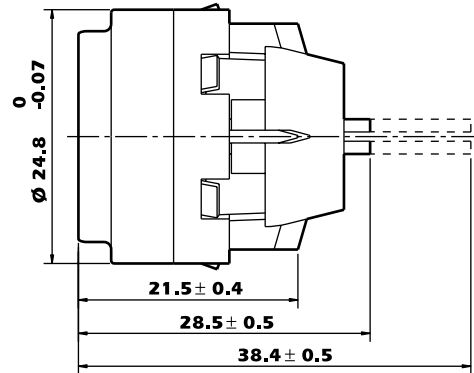
**IN 025 ND25**



MOUNTING DIMENSIONS

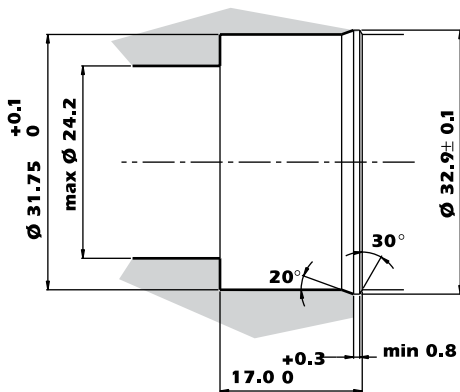


O RING

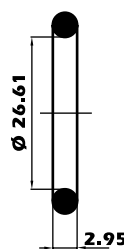


PRODUCT DIMENSIONS

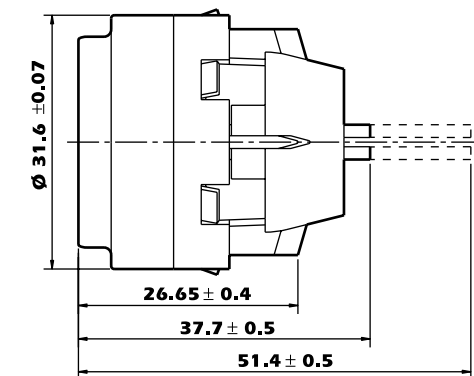
**IN 032 ND32**



MOUNTING DIMENSIONS

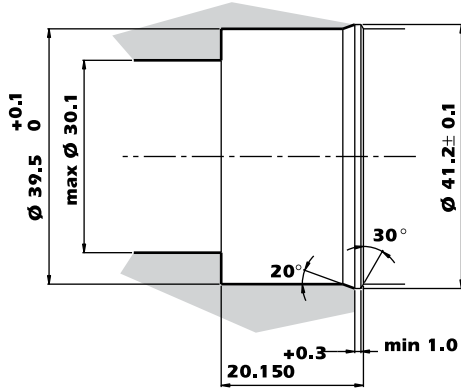


O RING

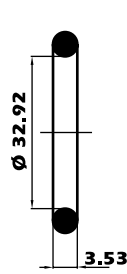


PRODUCT DIMENSIONS

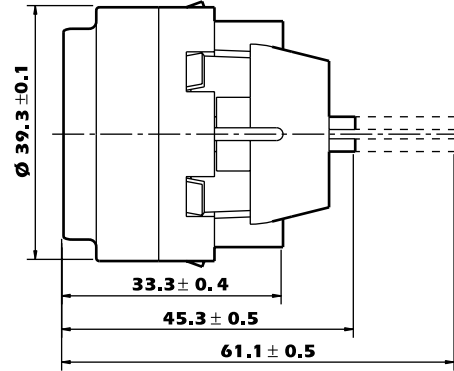
**IN 040 ND40**



MOUNTING DIMENSIONS

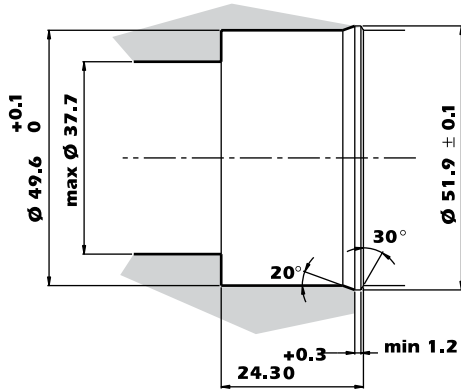


O RING

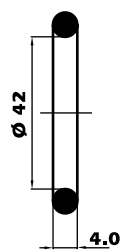


PRODUCT DIMENSIONS

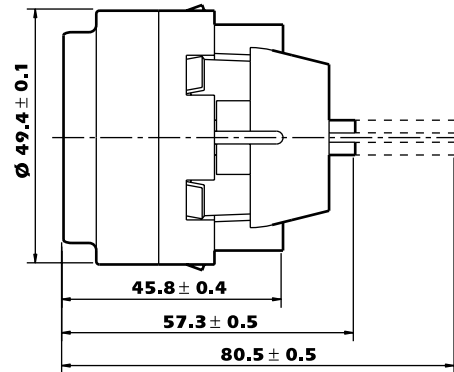
**IN 050 ND50**



MOUNTING DIMENSIONS

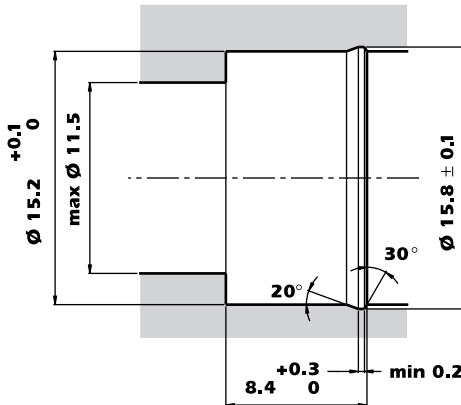


O RING

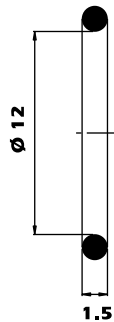


PRODUCT DIMENSIONS

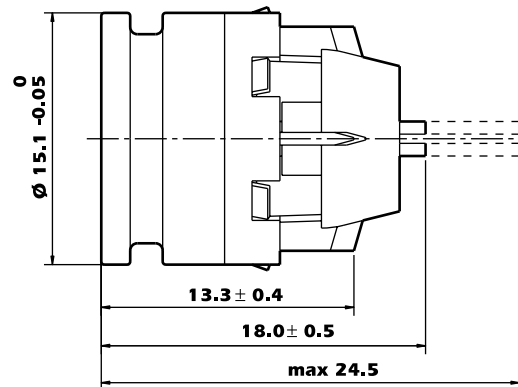
**IO 015 ND15**



MOUNTING DIMENSIONS



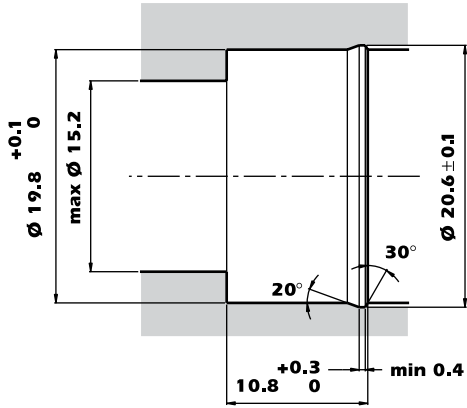
O RING



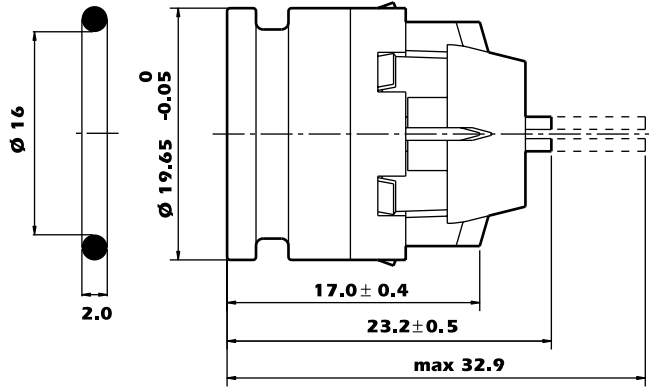
PRODUCT DIMENSIONS

CHAPTER L

**IO 020 ND20**



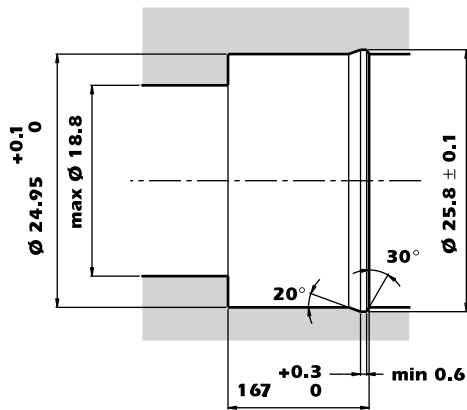
MOUNTING DIMENSIONS



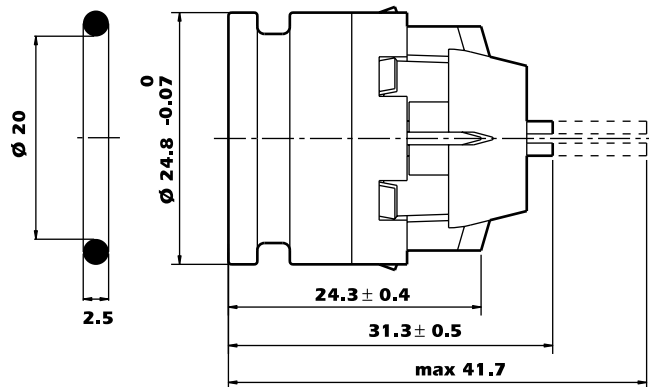
O RING

PRODUCT DIMENSIONS

**IO 025 ND25**



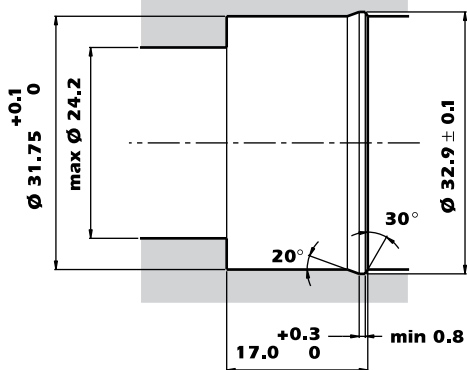
MOUNTING DIMENSIONS



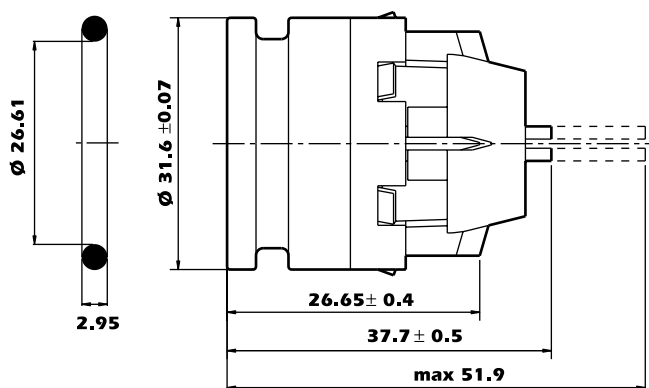
O RING

PRODUCT DIMENSIONS

**IO 032 ND32**



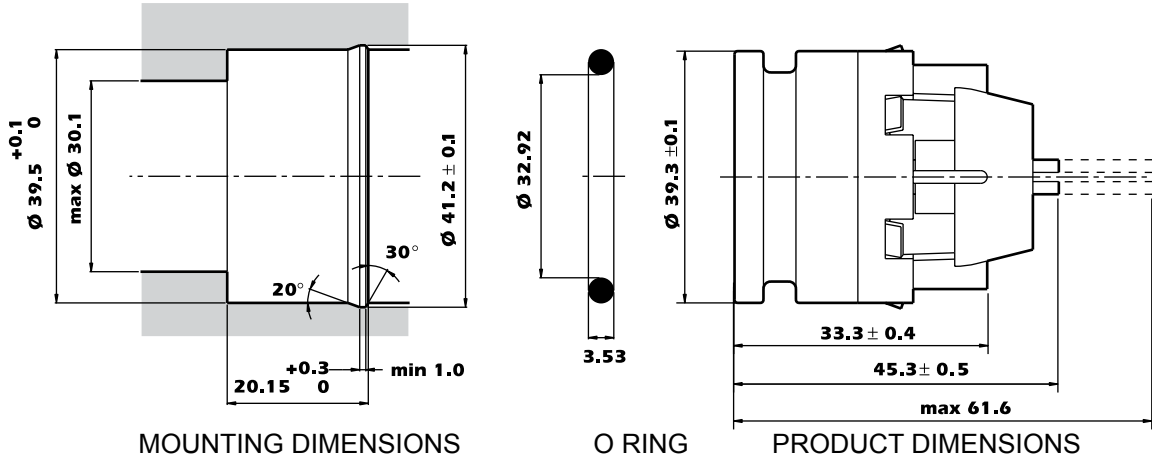
MOUNTING DIMENSIONS



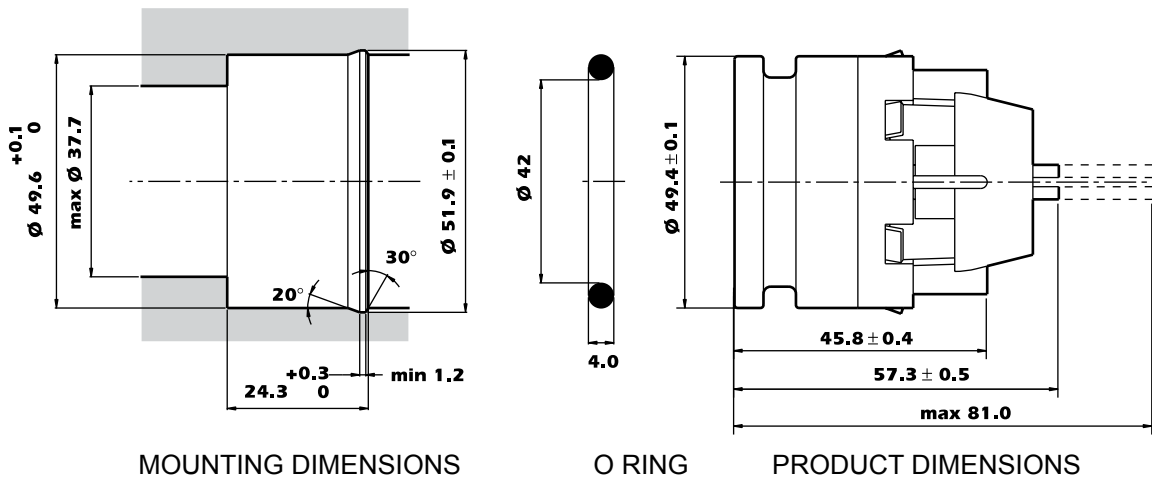
O RING

PRODUCT DIMENSIONS

**IO 040 ND40**



**IO 050 ND50**



The photographs, illustrations and description contained in this brochure are solely intended as an indication. Watts Industries UK Ltd reserves the right to make technical and design changes to its products without prior notice.



**Watts Industries UK Ltd**

Grosvenor Business Park, Evesham, Worcestershire, WR11 1GA, England

Phone +44 (0) 1386 446997 - Fax +44 (0) 1386 41923

Email [sales@wattsindustries.co.uk](mailto:sales@wattsindustries.co.uk) - [www.wattsindustries.com](http://www.wattsindustries.com)