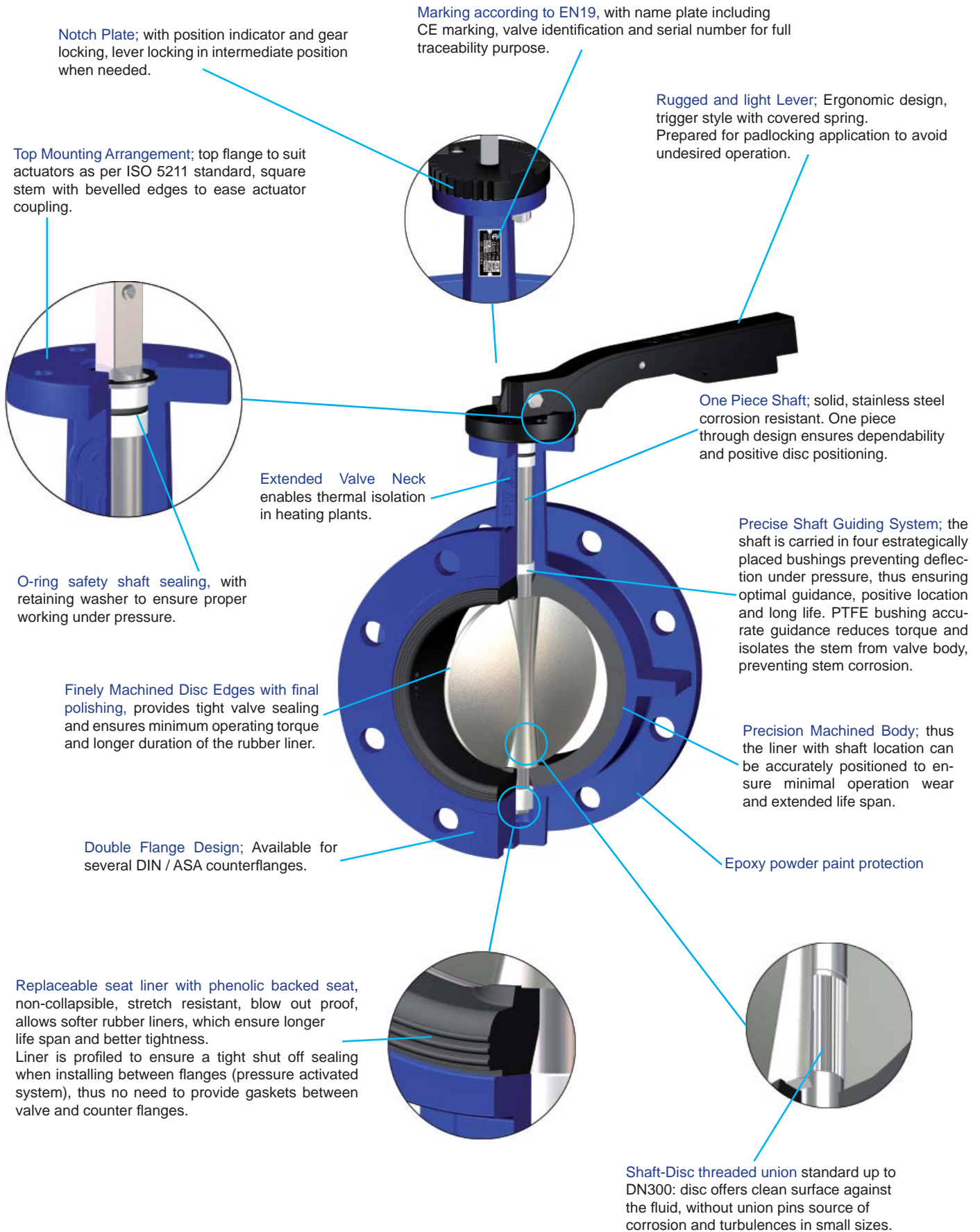


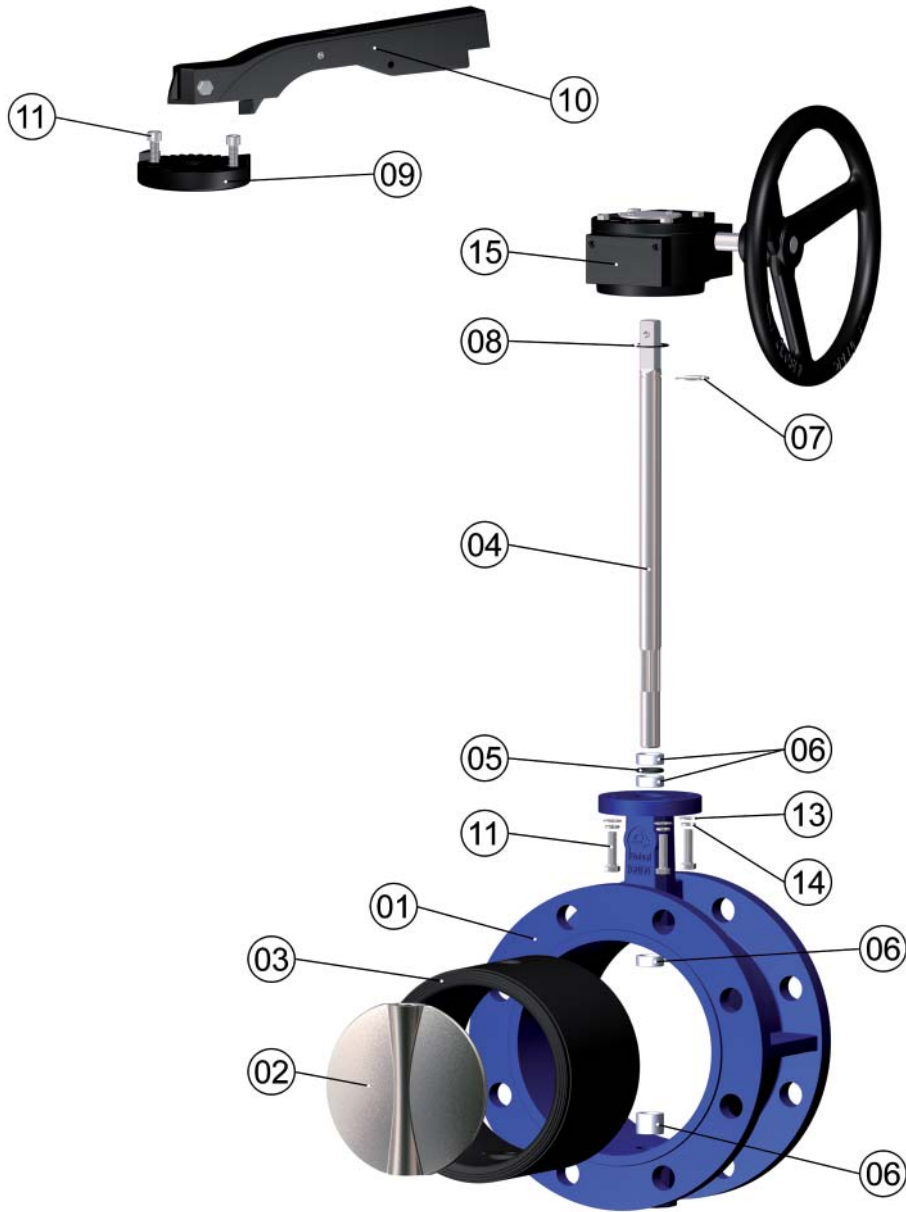
Unival® BUTTERFLY VALVES

Attributes of Design - Double Flange



Unival® BUTTERFLY VALVES

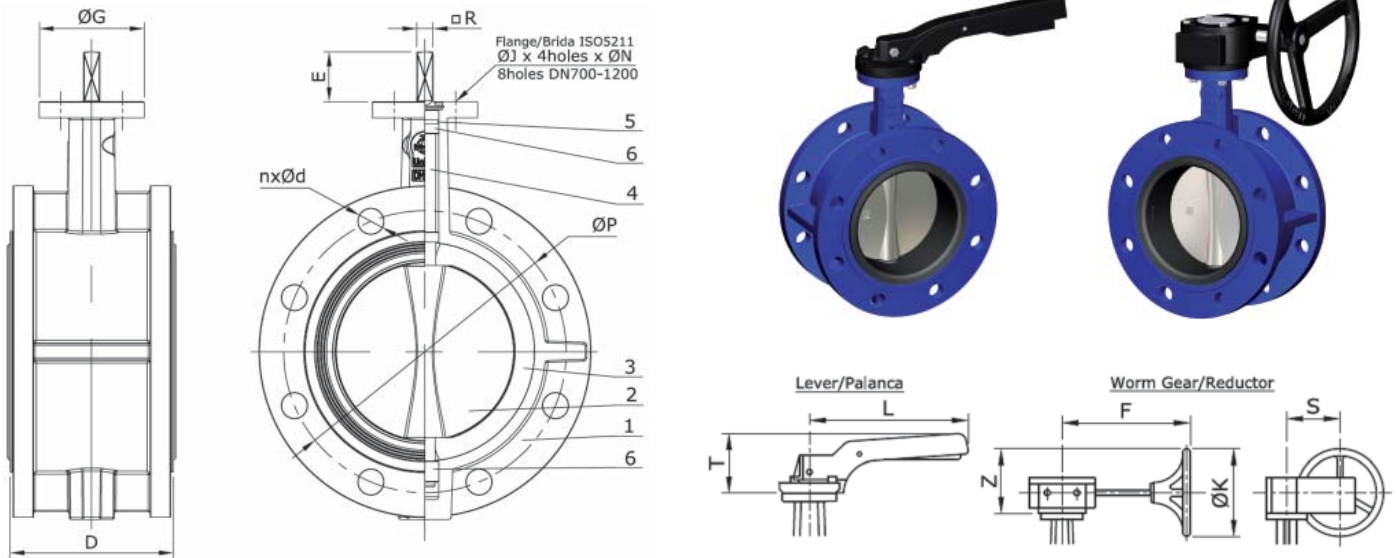
Parts and Materials - Double Flange



Nº	Part	Material
1	BODY	Cast Iron EN-JL1040 (GG25) / Ductile Iron EN-JS1030 (GGG40) / St. Steel A351 CF8M / Carbon Steel A216 WCB
2	DISC	Nickel Plated Ductile Iron EN-JS1030 (GGG40) / St. Steel CF8M / Al-Bronze / FEP or PFA Coated
3	LINER	NBR / EPDM / Viton / Hypalon / Silicon / PTFE / FEP / PFA
4	STEM	St. Steel AISI 416
5	O-RING	EPDM, NBR
6	BUSHINGS	PTFE
7	WASHER	Steel
8	CIRCLIP	Steel
9	NOTCH PLATE	Aluminium
10	HAND LEVER	Aluminium / Ductile Iron
11	STUDS	Steel
13	WASHERS	Steel
14	NUT	Steel
15	WORM GEAR	Ductile Iron

Unival® BUTTERFLY VALVES

Dimensions - Double Flange



DN	MAIN DIMENSIONS	COUPLING DETAIL					VALVE CONNECTION				LEVER & WORM GEAR					
		D	E	□R	ØG	ØJ	ØN	ØP	nxØd	ØP	nxØd	T	L	F	S	Z
50	108	32	9x9	65	50	7	125	4xØ18	125	4xØ18	74	200	156	42	116	150
65	112	32	9x9	65	50	7	145	4xØ18	145	4xØ18	74	200	156	42	116	150
80	114	32	9x9	65	50	7	160	8xØ18	160	8xØ18	74	200	156	42	116	150
100	127	32	11x11	65	50	7	180	8xØ18	180	8xØ18	74	200	156	42	116	150
125	140	42	14x14	90	70	9	210	8xØ18	210	8xØ18	79	278	156	42	168	250
150	140	42	14x14	90	70	9	240	8xØ18	240	8xØ22	79	278	156	42	168	250
200	152	30	17x17	125	102	11	295	8xØ18	295	12xØ22	40	355	223	70	195	300
250	165	32	22x22	150	125	13	350	12xØ22	355	12xØ26	-	-	223	70	195	300
300	178	32	27x27	150	125	13	400	12xØ28	410	12xØ26	-	-	223	80	195	300
350	190	45	27x27	150	125	14	460	16xØ28	470	16xØ26	-	-	223	80	195	300
400	216	50	27x27	150	125	14	515	16xØ28	525	16xØ30	-	-	270	114	208	300
450	222	50	30x30	210	165	22	565	20xØ28	585	20xØ30	-	-	270	114	258	300
500	229	65	30x30	210	165	22	620	20xØ28	650	20xØ33	-	-	339	125	222	300
600	267	70	40x40	210	165	22	725	20xØ31	770	20xØ36	-	-	339	125	222	300
700	292	80	Ø63,35	300	254	18	840	24xØ31	840	24xØ36	-	-	339	125	222	300
800	318	80	Ø63,35	300	254	18	950	24xØ34	950	24xØ39	-	-	339	125	222	300
900	330	118	Ø75	300	254	18	1050	28xØ34	1050	28xØ39	-	-	339	125	222	300
1000	410	142	Ø85	300	254	18	1160	28xØ37	1170	28xØ42	-	-	339	125	222	300
1200	470	150	Ø105	350	298	22	1380	32xØ40	1390	32xØ49	-	-	339	125	222	300

Dimensions are expressed in mm, and subjected to manufacturing tolerances. Data can be altered without notice by our Design Department for the product benefit.

Manufacture Design Standards:

Harmonised Standard EN 593

QA certified to ISO 9001:2000

According to Pressure Equipment Directive PED 97/23/EC

Testing standards EN12266-1 / API 598

Marking according to EN 19

Face to face dimensions according to EN558-1 Series 13

Flanged end connections to EN1092 PN16 DN50-300, PN10 DN350-1200. Other connections available on request

Epoxy painted Blue RAL5002

Operating Parameters:

Working pressure: 0...16 bar-g DN50-300; 0...10 bar-g DN350-1200

Working temperature: according to sealing material

See Engineering Data for complete overview of operating parameters

Main Applications: Water, oil, compressed air, low pressure steam, etc.