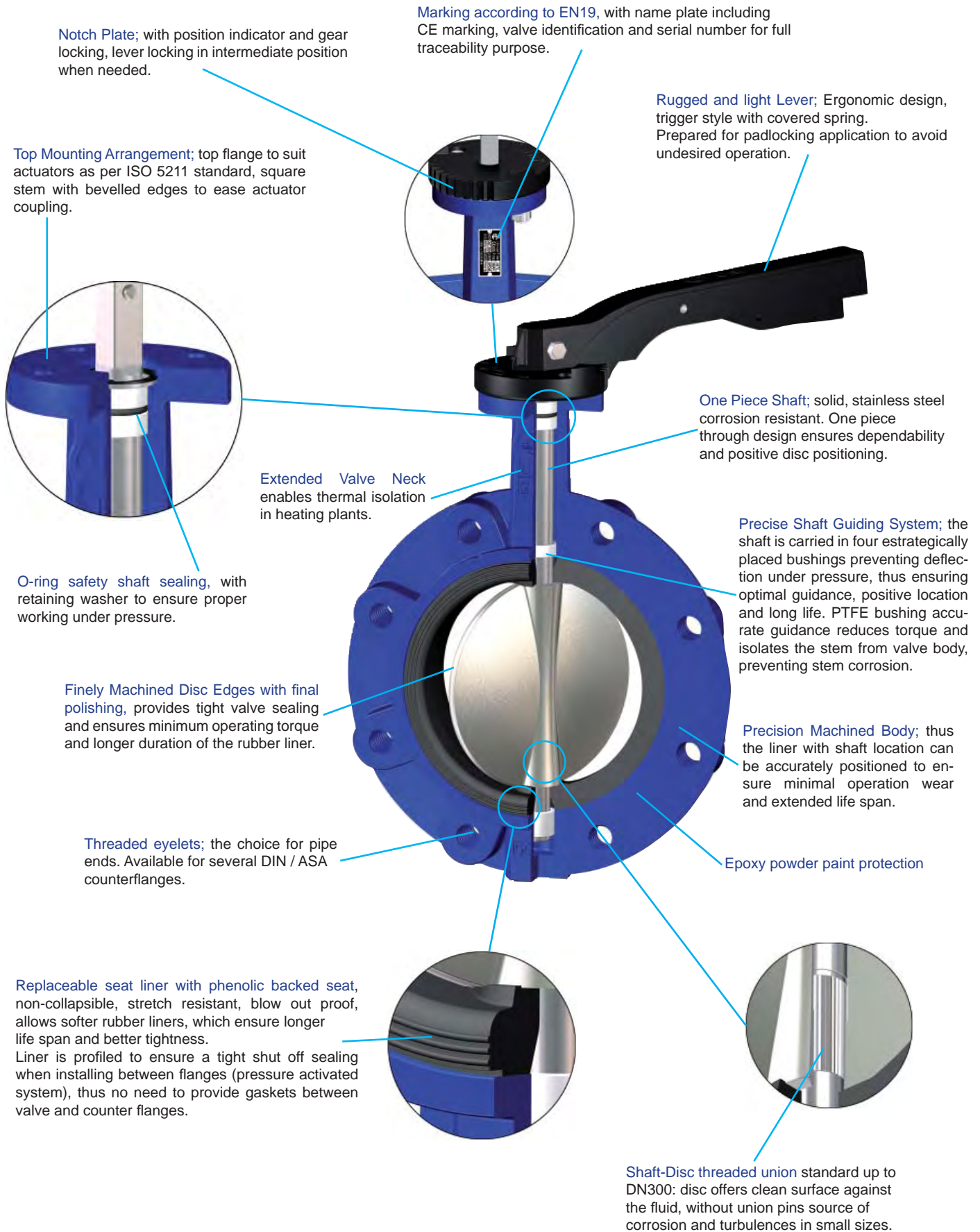


Unival® BUTTERFLY VALVES

Attributes of Design - Lug



Notch Plate; with position indicator and gear locking, lever locking in intermediate position when needed.

Marking according to EN19, with name plate including CE marking, valve identification and serial number for full traceability purpose.

Rugged and light Lever; Ergonomic design, trigger style with covered spring. Prepared for padlocking application to avoid undesired operation.

Top Mounting Arrangement; top flange to suit actuators as per ISO 5211 standard, square stem with bevelled edges to ease actuator coupling.

One Piece Shaft; solid, stainless steel corrosion resistant. One piece through design ensures dependability and positive disc positioning.

Extended Valve Neck enables thermal isolation in heating plants.

Precise Shaft Guiding System; the shaft is carried in four strategically placed bushings preventing deflection under pressure, thus ensuring optimal guidance, positive location and long life. PTFE bushing accurate guidance reduces torque and isolates the stem from valve body, preventing stem corrosion.

O-ring safety shaft sealing, with retaining washer to ensure proper working under pressure.

Finely Machined Disc Edges with final polishing, provides tight valve sealing and ensures minimum operating torque and longer duration of the rubber liner.

Precision Machined Body; thus the liner with shaft location can be accurately positioned to ensure minimal operation wear and extended life span.

Threaded eyelets; the choice for pipe ends. Available for several DIN / ASA counterflanges.

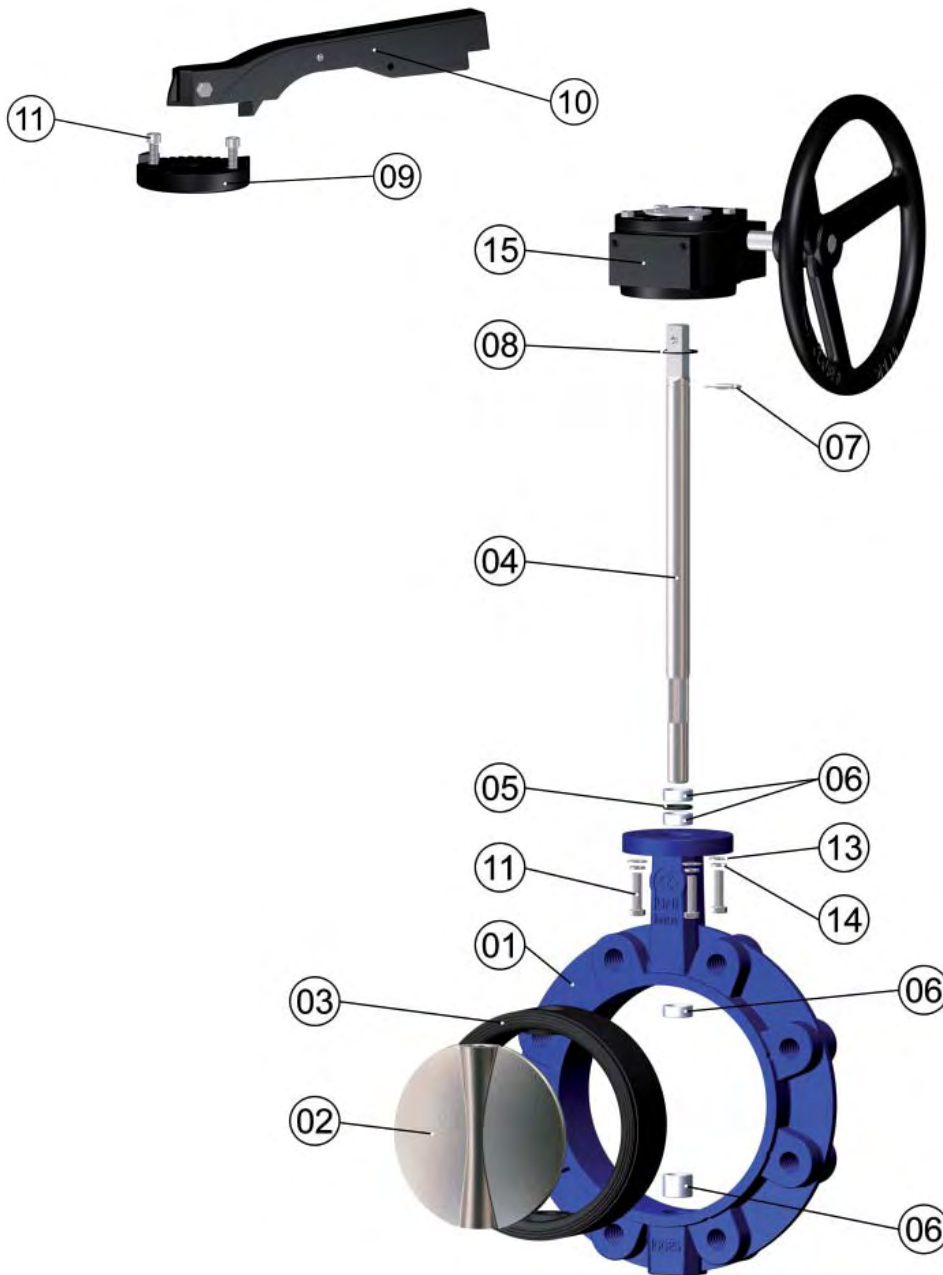
Epoxy powder paint protection

Replaceable seat liner with phenolic backed seat, non-collapsible, stretch resistant, blow out proof, allows softer rubber liners, which ensure longer life span and better tightness. Liner is profiled to ensure a tight shut off sealing when installing between flanges (pressure activated system), thus no need to provide gaskets between valve and counter flanges.

Shaft-Disc threaded union standard up to DN300: disc offers clean surface against the fluid, without union pins source of corrosion and turbulences in small sizes.

Unival® BUTTERFLY VALVES

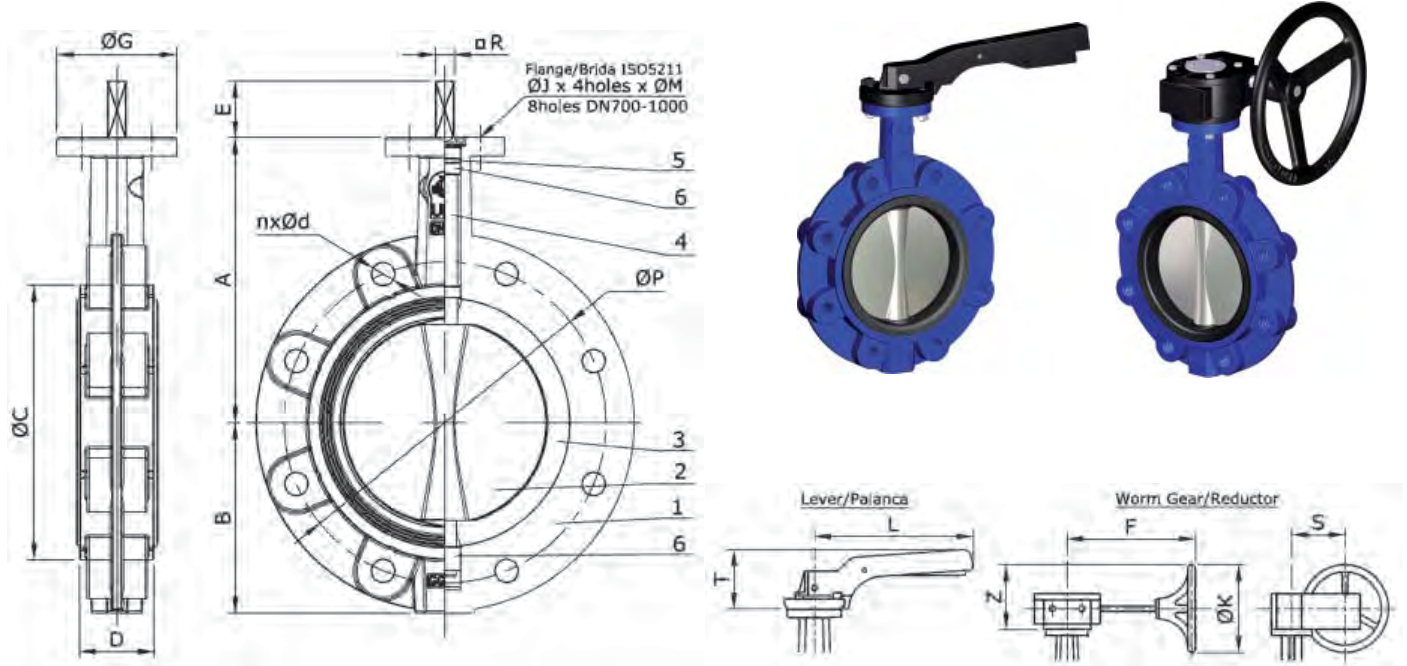
Parts and Materials - Lug Type



Nº	Part	Material
1	BODY	Cast Iron EN-JL1040 (GG25) / Ductile Iron EN-JS1030 (GGG40) / St. Steel A351 CF8M / Carbon Steel A216 WCB
2	DISC	Nickel Plated Ductile Iron EN-JS1030 (GGG40) / St. Steel CF8M / Al-Bronze / FEP or PFA Coated / Uranus UB6
3	LINER	NBR / EPDM / Viton / Hypalon / Silicon / PTFE / FEP / PFA
4	STEM	St. Steel AISI 416
5	O-RING	EPDM, NBR
6	BUSHINGS	PTFE
7	WASHER	Steel
8	CIRCLIP	Steel
9	NOTCH PLATE	Aluminium
10	HAND LEVER	Aluminium / Ductile Iron
11	STUDS	Steel
13	WASHERS	Steel
14	NUT	Steel
15	WORM GEAR	Ductile Iron

Unival® BUTTERFLY VALVES

Dimensions - Lug Type



DN	MAIN DIMENSIONS				COUPLING DETAIL					LUG CONNECTION				LEVER & WORM GEAR					Weight (kg)	
	A	B	ØC	D	E	ØR	ØG	ØJ	ØM	ØP	nxØd	ØP	nxØd	T	L	F	S	Z		ØK
25	121	53	65	33	32	7x7	65	50	7	85	4xM12	85	4xM12	74	200	156	42	116	150	2,5
32	121	57	73	33	32	7x7	65	50	7	100	4xM16	100	4xM16	74	200	156	42	116	150	2,5
40	130	61	82	33	32	9x9	65	50	7	110	4xM16	110	4xM16	74	200	156	42	116	150	7,0
50	136,5	77	95	43	32	9x9	65	50	7	125	4xM16	125	4xM16	74	200	156	42	116	150	7,5
65	142	87,5	109	46	32	9x9	65	50	7	145	4xM16	145	4xM16	74	200	156	42	116	150	8,5
80	158	95	127	46	32	9x9	65	50	7	160	8xM16	160	8xM16	74	200	156	42	116	150	9,5
100	180	107	152	52	32	11x11	65	50	7	180	8xM16	180	8xM16	47	200	156	42	116	150	11,0
125	192	121,5	180	56	42	14x14	90	70	9	210	8xM16	210	8xM16	79	278	156	42	168	250	13,5
150	215	144	207	56	42	14x14	90	70	9	240	8xM20	240	8xM20	79	278	156	42	168	250	15,5
200	241,5	171	260	60	30	17x17	125	102	11	295	8xM20	295	12xM20	40	355	223	70	195	300	25,0
250	280	205	315	68	32	22x22	150	125	13	350	12xM20	355	12xM24	40	507	223	70	195	300	45,0
300	310	235	370	78	32	27x27	150	125	13	400	12xM20	410	12xM24	37	507	223	80	195	300	57,0
350	337	258,5	418	78	45	27x27	150	125	14	460	16xM20	470	16xM24	-	-	223	80	195	300	79,5
400	357,3	303,3	470	102	50	27x27	150	125	14	515	16xM24	525	16xM27	-	-	270	114	208	300	123,0
450	380	365	525	114	50	30x30	210	165	22	565	20xM24	585	20xM27	-	-	270	114	258	300	155,0
500	426,3	392	575	127	65	30x30	210	165	22	620	20xM24	650	20xM30	-	-	339	125	222	300	228,5
600	616,5	513,5	693	154	70	40x40	300	210	22	725	20xM27	770	20xM33	-	-	339	125	222	300	309,0

Dimensions are expressed in mm, and subjected to manufacturing tolerances. Data can be altered without notice by our Design Department for the product benefit.

Manufacture Design Standards:

Harmonised Standard EN 593
 QA certified to ISO 9001:2000
 According to Pressure Equipment Directive PED 97/23/EC by a recognised Notify body
 Testing standards EN12266-1 / API 598
 Marking according to EN 19
 Face to face dimensions according to EN558-1 Series 20
 Body end connections lug type to be installed between flanges
 EN1092-1/2 PN16 DN25-300, PN10 DN350-600. Other connections available on request
 Epoxy painted Blue RAL5002

Operating Parameters:

Working pressure: 0...16 bar-g DN25-300; 0...10 bar-g DN350-600
 Working temperature: according to sealing material

See Engineering Data for complete overview of operating parameters

Main Applications: Water, oil, compressed air, low pressure steam, etc.