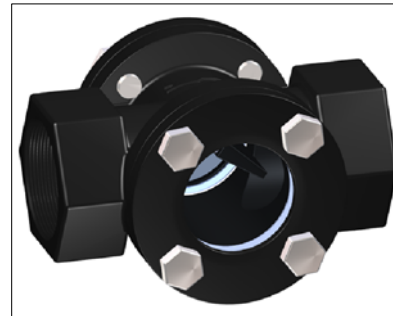


DIMENSIONS/DIMENSIONES*(mm)

DN	Ød	L	H	ØC	ØA	Approx.Weight/ Peso (Kg)
1/2"	15	100	70	40	50	1,5
3/4"	20	120	90	50	63	2
1"	25	120	90	50	63	2
1-1/4"	32	150	120	65	80	4
1-1/2"	40	150	120	65	80	4
2"	50	180	140	80	100	6,5

*Nominal dimensions subject to manufacturing tolerance/
Medidas nominales sujetas a tolerancias de fabricación

Ps	0-16 bar-g
Ts	-10°C/180°C





NO.	PART/PARTE	MATERIAL
1	BODY/CUERPO	Nodular Iron/Fund. Nodular GGG50
2	CAP/TAPA	Nodular Iron/Fund. Nodular GGG50
3	GASKET/JUNTA	Fiber/Cartón
4	GLASS/CRISTAL	Atalax
5	BOLT/TORNILLO	Steel/Acero 6.8

MAIN FEATURES/PRINCIPALES ATRIBUTOS

- PIPE THREAD IN ACCORDANCE/TUBO ROSCA DE ACUERDO A: DIN259, DIN2999, ISO228 CLASS A
- OPTIONAL SCREWED END/OPCIÓN DE ROSCA: NPT, BSPT
- PRESSURE TEST/PRUEBA DE PRESIÓN: EN12266-1
- MARKING/MARCADO: EN19
- PAINT/PINTURA: Black/Negro

Data subject to alteration due to continuous improvement.
Sujeto a cambios debido a la mejora continua de nuestros productos.

Customer/Cliente -		Project/Proyecto -		Description/Descripción SIGHT GLASS SCREWED END	
Your Ref./Su Ref. -		Our Ref./Nuestra Ref. -		 PSR 20 MIRILLA DE DOBLE CRISTAL ROSCADA	
	Rev. 1	Rev. 2	Rev. 3		
Date/Fecha					
Name/Nombre					
		Drawn/Dibujado APV	Approved/Aprobado JG	Drawing N°/Plano N°	
		Checked/Comprob. DT	Date/Fecha 01/06/07	PSR20GGG50 CAD	