

MAW®
Flanged Stop Globe Valves PN 16

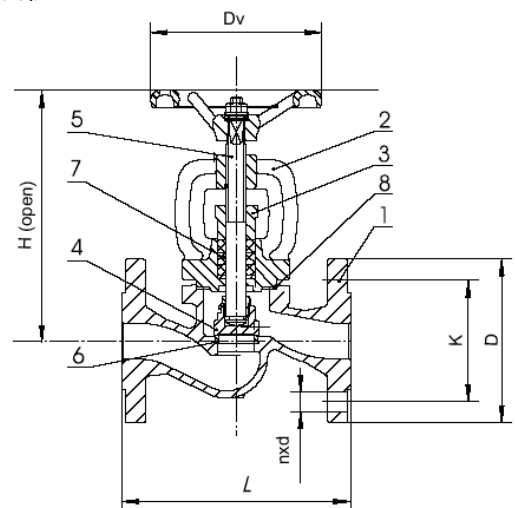
Globe Valves Series 300 are a price wise option for pipe work isolation of hot water, cold water, steam and neutral fluids with service temperatures of up to 300° C. They are single flow direction valves with fluid coming upwards the plug thus favouring a positive stream. The valve plug is not provided with soft seat and therefore the use of strainers upstream the valve are strongly recommended to avoid valve seating damage.


300

* Please observe Operating and Maintenance Rules as well as all essential safety Requirements and labour health care guidance before valve installation and plant start up.

PARTS & MATERIALS

Part	Materials
1.Body	Cast Iron EN-GJL-250
2.Bonnet	Cast Iron EN-GJL-250
3.Gland	Cast Iron EN-GJL-250
4.Disc	St. Steel X20Cr13
5.Stem	St. Steel X20Cr13
6.Seat Ring	St. Steel X20Cr13
7.Gland Packing*	Graphite
8.Union Gasket*	Graphite CrNi



The tabulated materials mean the standard manufacturing range. Other materials options may be provided on request. The parts marked with star mean the recommended usual spare parts.

DIMENSIONAL DATA

SIZE	15	20	25	32	40	50	65	80	100	125	150	200	250	300
L	130	150	160	180	200	230	290	310	350	400	480	600	730	850
D	95	105	115	140	150	165	185	200	220	250	285	340	405	460
K	65	75	85	100	110	125	145	160	180	210	240	295	355	410
H (open)	172	173	182	200	255	273	295	332	369	432	483	606	758	830
nxd	4x14	4x14	4x14	4x19	4x19	4x19	4x19	8x19	8x19	8x19	8x23	12x23	12x28	12x28
Kg	3,6	4,0	5,0	6,8	9,3	12,2	18,0	24,5	35,0	55,0	77,0	145,0	243,0	341,0

Dimensions are expressed in mm.
General arrangement drawings are available on request from our Design section.

Design Pressure: PN 16
Design Temperature: -10°C ...300°C
Flanges sized and drilled to EN 1902-2 PN16
Face to face length in accordance with DIN 3202 F1 – present EN 558-1 Series 1
Test Procedure in accordance with EN 12226-1 and BS6755 p.1
Marking: EN 19
In compliance with the European Pressure Directive PED 97/23/CE
Quality Assurance Certification: ISO 9001:2000

